

COMMUNITY PROFILE

CONTENTS:

Population	1
Property Tax Rate	1
Housing	2
Income and Education	2
Labor Force	3
Transportation	3
Parks and Recreation	4
Community Facilities	4



Welcome to McHenry!

Current estimated populations:

Illinois: 12,852,548

McHenry County: 318,641

City of McHenry: 27,525

The state of Illinois is 55,584 square miles. McHenry County is 604 square miles. The City of McHenry is approximately 13 square miles.

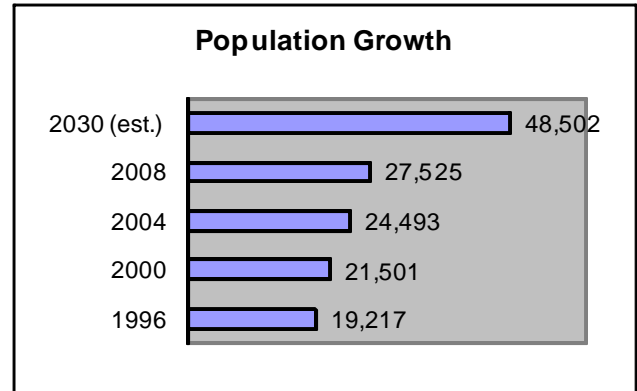
Total Assessed Valuation

Year	Total EAV	Change %
2003	\$568,108,099	+9.6%
2004	\$615,308,466	+8.3%
2005	\$688,546,159	+11.9%
2006	\$769,212,014	+11.7%
2007	\$776,708,475	+9.74%
2008	\$873,829,291	+4.4%

POPULATION

Population Growth

Year	Total Population
1980	13,536
1990	16,117
1993	18,180
1996	19,217
2000	21,501
2004	24,493
2008	27,525
2030 (est.)	48,502



City of McHenry Population - 1996-2030

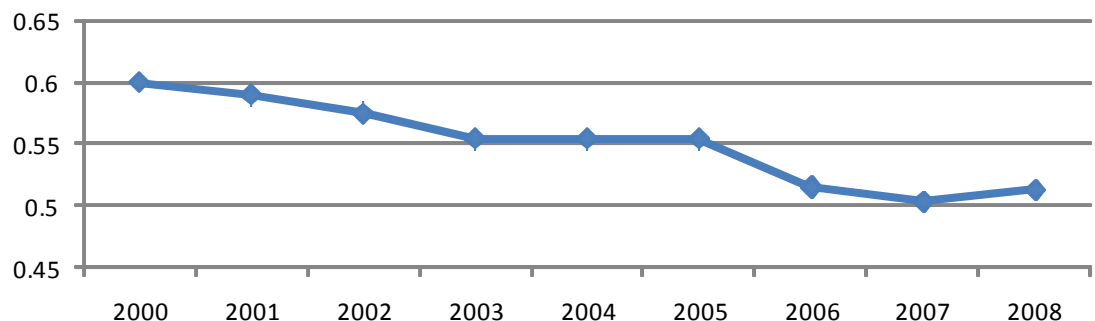
Age Classifications (2007)

Age Group	Total Population	%
Under 15	5,920	23.2%
15-19	1,800	7.1%
20-24	1,289	5.1%
25-34	4,281	16.8%
35-44	3,931	15.4%
45-54	3,464	13.6%
55-64	2,154	8.4%
65 and Over	2,671	10.4%
Total	27,525	100%

Racial Classifications (2007)

Race	Total Population	%
White	22,285	87.4%
Asian/Hawaiian	200	1.8%
Other Race	711	3.3%
Some other Race	2,703	10.6%

PROPERTY TAX RATE



City of McHenry Property Tax Rate - 2000-2008



Single Family Housing, Martin Woods

Housing Info:

- The average sale price of a single-family home in McHenry in 2009 was \$176,174.
- There were 2,133 new residential permits issued between 2000 and 2008.
- There were 279 home sales in the City of McHenry in 2009.
- There are approximately 10,000 parcels in the City of McHenry.

Schooling Info:

- McHenry is served by one elementary school district and one high school district.
- Public: 6 elementary schools, 2 middle schools, and 2 high schools.
- Private: 3 elementary/middle schools, and 1 high school.



Edgebrook Elem. School, District 15

HOUSING

Average Home Sale Price (2009)

Type	Price
2-Bedroom	\$130,699
3-Bedroom	\$175,892
4-Bedroom	\$221,932

Average Apartment Rent (2008)

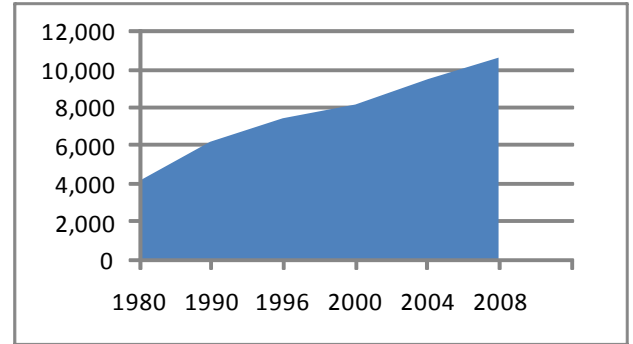
1 bed: \$700 2 bed: \$950

**Housing Growth
1980 to 2008**

Year	Total Housing Units
1980	4,115
1990	6,171
1996	7,359
2000	8,127
2004	9,417
2008	10,589

Housing Type (2007)

Type	Units	
Owner Occupied	6,654	67.2%
Renter Occupied	2,559	25.9%
Vacancies	686	7.0%
Total	9,899	100%



City of McHenry Housing Units - 1980-2008

INCOME & EDUCATION

**City of McHenry
Household Income (2007)**

Income	% of Total
\$14,999 & Under	8.0
\$15,000 to \$34,999	17.0
\$35,000 to \$49,999	12.1
\$50,000 to \$74,999	22.4
\$75,000 & Over	41.0

Median Household Income (2007)

City of McHenry	\$63,446
Nation	\$43,389

Per Capita Family Income (2007)

City of McHenry	\$26,739
State of Illinois	\$38,409
Nation	\$36,714

City of McHenry-Educational Attainment (2007)

Age 25+ Level	% of Total
Less Than 9th Grade	5.3
High School, No Diploma	6.2
High School Graduate	34.8
Some College, No Degree	23.1
Associates Degree	6.0
Bachelors Degree	18.3
Graduate Degree/Prof. Deg.	6.4

School District Statistics (2007)

Elementary District 15 (K-8)

Pupil Teacher Ratio	22.6:1
\$ Spent per Pupil	\$4,315

High School District 156 (9-12)

Pupil Teacher Ratio	20.0:1
\$ Spent per Pupil	\$5,538
Avg. ACT Score	20.0
% Graduated	93.5%
% Continuing to College	73.9%

LABOR FORCE

Available Labor Force (2010)

Counties	Total Unemployed
Boone (IL)	6,048
Cook (IL)	306,621
DeKalb (IL)	6,939
DuPage (IL)	49,155
Kane (IL)	33,036
Lake (IL)	49,329
McHenry (IL)	20,753

City of McHenry Labor Force (2010)

Labor Force: 15,080
Unemployed: 11.8%

McHenry County Median Wages (2008)

Occupational Title	(Hourly Wage)
Accountants and Auditors	\$31.39
Management Analysts	\$25.64
Loan Officers	\$27.24
Surveyors	\$29.75
Mechanical Engineers	\$35.89
Urban and Regional Pl.	\$27.51
Lawyers	\$37.15
Librarians	\$24.29
Floral Designers	\$14.88
Pharmacists	\$53.99
Registered Nurses	\$31.30
Physical Therapists	\$43.42

McHenry County Labor Force Categorization (2009)

Census Category	Total %
Manufacturing	20.8%
Retail Trade	16.4%
Health Care/Social Asst.	12.5%
Accommodations & Food Svcs.	9.4%
Construction	7.7%
Wholesale Trade	6.8%
Admin. & Sup.& Waste Mgmt.	6.4%
Fabricated Metal Products	3.3%
Plastics & Rubber Products	3.3%
Machinery	2.7%
Transportation/Warehousing	1.9%

Occupational Title	(Hourly Wage)
Veterinarians	\$51.70
Dental Hygienists	\$32.60
Security Guards	\$12.60
Chefs/Head Cooks	\$17.16
Short Order Cooks	\$7.71
Retail Salespersons	\$10.63
Child Care Workers	\$8.79
Data Entry Keyers	\$12.10
Carpenters	\$23.92
Construction Laborers	\$29.67
Bakers	\$12.63
School Bus Drivers	\$11.71
Printing Machine Operators	\$15.49



Medela, Inc.

McHenry is home to over 100 industrial firms, with many times that number in the area. Our largest employers include:

Centegra (NIMC)	1,050
Follett Library	700
Follett Software	700
Medela	400
Pioneer Center	250
Meyer Material	250
Fabrik Industries	250
Family Services	133
City of McHenry	117
Chroma Corp.	110
Cunat	107

McHenry is located:

55 miles northwest of the City of Chicago,

10 miles south of the Wisconsin border, and

65 miles southwest of the City of Milwaukee.



Travel Distances

City	Hwy. Miles
Atlanta	730
Chicago	55
Cleveland	343
Dallas	936
Denver	1,000
Kansas City	499
Los Angeles	2,095
Memphis	544
Milwaukee	65
Minneapolis	390
New Orleans	944
New York	840
St. Louis	335
Seattle	2,063

TRANSPORTATION

Major Roadways

Local	Interstate
IL 31 and IL 120	I-90 18 Mi. S
US 12 6 Mi. E	I-94 20 Mi. E
US 14 8 Mi. S	I-43 30 Mi. NW
IL 47 10 Mi. W	I-39 43 Mi. W
US 20 25 Mi. SW	I-80 76 Mi. S

Public Transportation

METRA Commuter Trains to Chicago -
UP Northwest Line
PACE Bus and Dial-A-Ride Service

Airports

Commercial	
Chicago - O'Hare	42 Mi. SE
Milwaukee - Mitchell	57 Mi. NE
Greater Rockford	55 Mi. W

Private

Galt	7 Mi. NW
Lake in the Hills	10 Mi. S
(Available charter, storage and maintenance services)	

PARKS AND RECREATION



Fox Ridge Park



Knox Park Pool



McHenry Zone Skate Park

- 35 local parks and playgrounds, consisting of 633 acres.
- State Parks: Glacier Park (2,800 ac.), Moraine Hills (1,700 ac.), and McHenry Dam.
- Boat launches on the Fox River and Chain O' Lakes.
- Municipal swimming pool.
- Lighted tennis courts.
- 24 McHenry County golf courses (17 public and 7 private).
- Special events and recreational programming for children and adults (dance, swimming, horseback riding, organized athletic leagues).
- McHenry County Prairie Trail (access to over 100 miles of trails for pedestrians, bicycling, rollerblading, and cross-country skiing, and including some areas for horseback riding and snowmobiles).
- Skate/bike park.



Veteran's Park, Downtown McHenry

City of McHenry

333 S. Green Street
 McHenry, IL 60050
 Phone: (815) 363-2100
 Fax: (815) 363-2119



McHenry Municipal Center

Mayor Susan E. Low
 Alderman:
 Ward 1: Vic Santi
 Ward 2: Andrew Glab
 Ward 3: Jeffrey Schaefer
 Ward 4: Geoff Blake
 Ward 5: Richard Wimmer
 Ward 6: Robert Peterson
 Ward 7: Geri Condon
 City Clerk: Janice Jones
 Administrator: Doug Maxeiner

For additional information,
 contact Douglas Martin.
 (815) 363-2170.
 dmartin@ci.mchenry.il.us

COMMUNITY FACILITIES

City of McHenry Government
 Full-Time City Administrator.
 Professional building department.
 Public water and sanitary service.
 117 full-time employees.
 Budget FY09: \$30,150,197

Police Department (CALEA Accredited)
 46 Sworn Officers.
 3 Community Service Officer.
 1.67 Sworn Officers per 1,000 Residents.

Fire Protection District
 160 Firefighters.
 Class "3" Fire Insurance Rating.

McHenry Public Library District
 28,000 s.f. facility, with 80,000 items.

McHenry County College
 60,000 students.
 23 Associate Degree programs.
 Center for Commerce and Econ. Dev. and ISO Training.

Northern Illinois Medical Center
 Level II Trauma Center.
 177-bed acute care facility.
 325 physicians on staff.
 State of the art heart center and Sage Cancer Center.



Centegra Northern Illinois Medical Center