

**CITY OF MCHENRY, ILLINOIS  
TRAFFIC AND  
MOTOR VEHICLE  
CODE**

**Elected Officials**

**Susan E. Low, Mayor**

**Janice C. Jones, City Clerk**

**Aldermen**

**Victor A. Santi, Ward 1**

**Andrew A. Glab, Ward 2**

**Jeffrey A. Schaefer, Ward 3**

**Steven C. Murgatroyd, Ward 4**

**Richard W. Wimmer, Ward 5**

**Robert J. Peterson, Ward 6**

**Geri A. Condon, Ward 7**

**ADOPTED: 10/7/98**

**(MC-98-714)**

**BE IT ORDAINED BY THE CITY COUNCIL OF THE CITY OF MCHENRY, MCHENRY COUNTY, ILLINOIS, as follows:**

**SECTION 1. Chapter 13 of the Municipal Code, City of McHenry, Illinois be and the same is hereby amended to read as follows:**

**AN ORDINANCE REGULATING TRAFFIC  
AND MOTOR VEHICLES IN THE  
CITY OF McHENRY, ILLINOIS (MC-98-714)**

**CHAPTER 13**

ARTICLE I	DEFINITIONS	PAGE 1
	VEHICLE LICENSES	PAGE 7
ARTICLE II	SPEED RESTRICTIONS	PAGE 15
ARTICLE III	ONE-WAY STREETS	PAGE 25
ARTICLE IV	RIGHT TURN ONLY LANES	PAGE 25
ARTICLE V	SPECIAL STOPS REQUIRED	PAGE 30
ARTICLE VI	PARKING REGULATIONS	PAGE 45
ARTICLE VII	DESIGNATED PUBLIC DRIVEWAYS	PAGE 60
ARTICLE VIII	WEIGHTS AND LOADS	PAGE 60
ARTICLE IX	MISCELLANEOUS	PAGE 65
ARTICLE X	PENALTIES	PAGE 70
ARTICLE XI	VALIDITY	PAGE 72
ARTICLE XII	PRIOR ORDINANCES REPEALED	PAGE 72
ARTICLE XIII	PUBLICATION IN PAMPHLET FORM	PAGE 72
ARTICLE XIV	EFFECTIVE DATE	PAGE 72

**A P P E N D I X**

A - 1	GREEN STREET MUNICIPAL PARKING LOT	PAGE 73
A - 2	MAIN STREET MUNICIPAL PARKING LOTS	PAGE 74
A - 3	COURT STREET PARKING LOT	PAGE 75
A - 4	KNOX PK EAST PARKING LOT (SWIMMING POOL)	PAGE 76
A - 5	PETERSEN PARK PARKING LOTS	PAGE 77
A - 6	RIVERSIDE DRIVE PARKING LOT	PAGE 78

**CHAPTER 13  
TRAFFIC AND MOTOR VEHICLES  
ARTICLE I**

**13-001 TRAFFIC REGULATIONS**

That pursuant to Section 5/20-204 of the Illinois Vehicle Code (625 ILCS 5/20-204), the City of McHenry hereby adopts and incorporates by reference the following sections of the Illinois Vehicle Code and subsequent amendments, as the Vehicle Code for the City of McHenry. The section numbers used in the Illinois Vehicle Code shall be identical to those section numbers in the McHenry Vehicle Code:

5/1 et seq.	Title and Definitions, excluding paragraph 1-100;
5/6 et seq.	The Illinois Driver Licensing Law;
5/11 et seq.	Rules of the Road;
5/12 et seq.	Equipment of Vehicles;
5/15 et seq.	Size, Weight, Load and Permits;
5/16 et seq.	Enforcement, Penalties, and Disposition of Fines and Forfeitures;
5/20 et seq.	Miscellaneous Provisions, Effect of Act and Repeal of Named Acts;
25/1 et seq.	Child Passenger Protection Act; and
Act 40	Snowmobile Registration and Safety Act.

**Definitions**

- 13-001 DEFINITIONS OF WORDS AND PHRASES.** The following words and phrases when used in this Act shall, for the purpose of this Act, have the meanings respectively ascribed to them in this Chapter, except when the context otherwise requires and except where another definition set forth in another Chapter of this Act and applicable to that Chapter or a designated part thereof is applicable.
- 13-002 ABANDONED VEHICLE.** A motor vehicle standing or parked on the public way which vehicle is either (a) in such state of disrepair as to be incapable of being driven in its present condition, or (b) has not been moved or used for more than seven (7) consecutive days and is apparently deserted.
- 13-003 ALLEY.** A public way within a block, generally giving access to the rear of lots or buildings and not used for general traffic circulation.
- 13-004 ARTERIAL STREET.** Any U.S. or State numbered route, controlled-access highway, or other major radial or circumferential street or highway designated by local authorities within their respective jurisdictions as part of a major arterial system of streets or highways.

- 13-005 AUTHORIZED EMERGENCY VEHICLE.** Emergency vehicles of municipal departments or public service corporations as are designated or authorized by proper local authorities; police vehicles; vehicles of the fire department and ambulances.
- 13-006 BICYCLE.** Every device propelled by human power upon which any person may ride, having two tandem wheels either of which is more than 16 inches in diameter.
- 13-007 BUS.** Every motor vehicle, other than a commuter van, designed for carrying more than 10 passengers and used for the transportation of persons; and every motor vehicle, other than a taxicab, designed and used for the transportation of persons for compensations.
- 13-008 BUS STOP.** A fixed area in the roadway parallel and adjacent to the curb to be occupied exclusively by buses for lay-over in operating schedules or waiting for passengers.
- 13-009 BUSINESS DISTRICT.** The territory contiguous to and including a highway when within any 600 feet along such highway there are buildings in use for business or industrial purposes, including but not limited to hotels, banks, or office buildings, railroad stations and public buildings which occupy at least 300 feet of frontage on one side or 300 feet collectively on both sides of the highway.
- 13-010 CAMPER.** A recreational motor vehicle of the Second Division converted or equipped and primarily used for living quarters or for human habitation, rather than for the transportation of freight, goods, wares, and merchandise and not used as a commercial vehicle.
- 13-011 CONTROLLED-ACCESS HIGHWAY.** Every highway, street or roadway in respect to which owners or occupants of abutting lands and other persons have no legal right of access to or from the same except at such points only, and in such manner, as may be determined by the public authority having jurisdiction over such highway, street or roadway.
- 13-012 COMMERCIAL VEHICLE.** Any vehicle operated for transportation of persons or property in the furtherance of any commercial or industrial enterprise, For-Hire or Not-for-Hire not including however a commuter van or a recreational vehicle not being used commercially.
- 13-013 CROSS WALK.**
- (a) That part of a roadway at an intersection included within the connections of the lateral lines of the sidewalks on opposite sides of the highway measured from the curbs or, in the absence of curbs, from the edges of the traversable roadway;
  - (b) Any portion of a roadway at an intersection or elsewhere distinctly indicated for pedestrian crossing by lines or other markings on the surface.
- 13-014 CURB LOADING ZONE.** A space adjacent to a curb reserved for the exclusive use of vehicles during the loading or unloading of passengers or materials.
- 13-015 DEALER.** Every person engaged in the business of buying, selling or exchanging vehicles and who has an established place of business or such purpose in this City.
- 13-016 DRIVER.** Every person who drives or is in actual physical control of a vehicle.
- 13-017 FOR-HIRE.** The operation of a vehicle for compensation and subject to federal regulation by the Interstate Commerce Commission or to state regulation by the Illinois Commerce Commission.
- 13-018 GROSS WEIGHT.** The weight of a vehicle whether operated singly or in combination without load, plus the weight of the load thereon.

- 13-019 HIGHWAY.** The entire width between the boundary lines of every way publicly maintained when any part thereof is open to the use of the public for purposes of vehicular travel.
- 13-020 HOUSE CAR.** A recreational motor vehicle of the First Division converted or equipped and primarily used for living quarters or for human habitation, rather than as a passenger car and not used as a commercial vehicle.
- 13-021 HOUSE TRAILER.**  
(a) A recreational trailer or semi-trailer equipped and used for living quarters or for human habitation (temporarily or permanently) rather than for the transportation of freight, goods, wares, and merchandise; or  
(b) A house trailer or a semi-trailer which is used commercially (temporarily or permanently), that is, for the advertising, sales, display or promotion of merchandise or services, or for any other commercial purpose except the transportation of property for distribution by a private carrier.
- 13-022 INTERSECTION.**  
(a) The area embraced within the prolongation or connection of the lateral curb lines, or, if none, then the lateral boundary lines of the roadways of two highways which join one another at, or approximately at, right angles or the area within which vehicles traveling upon different roadways joining at any other angle may come in conflict.  
(b) Where a highway includes two roadways 30 or more feet apart, then every crossing of each roadway of such divided highway by an intersecting highway shall be regarded as a separate intersection.  
(c) The junction of an alley with a street or highway does not constitute an intersection.
- 13-023 LANED ROADWAY.** A roadway which is divided into two or more clearly marked lanes for vehicular traffic.
- 13-024 LOCAL AUTHORITY.** Every county, municipal and other local board or body having authority to enact laws relating to traffic under the Constitution and laws of this State.
- 13-025 MERGING TRAFFIC.** A maneuver executed by the drivers of vehicles or converging roadways to permit entry into the junction thereof, wherein the driver of each vehicle involved is required to adjust his vehicular speed and lateral position so as to avoid a collision with any other vehicle.
- 13-026 MOTOR VEHICLE.** Every vehicle which is self-propelled and every vehicle which is propelled by electric power obtained from overhead trolley wires, but not operated upon rails. For this Act motor vehicles are divided into two divisions:  
First Division: Those motor vehicles which are designed for the carrying of not more than 10 persons.  
Second Division: Those motor vehicles which are designed for carrying more than 10 persons, those designed or used for living quarters and those motor vehicles which are designed for pulling or carrying freight or cargo, and those motor vehicles of the First Division remodelled for use and used as motor vehicles of the Second Division.
- 13-027 MOTORCYCLE.** Every motor vehicle having a seat or saddle for the use of the rider and designed to travel on not more than 3 wheels in contact with the ground, but excluding a tractor.
- 13-028 MOTOR DRIVEN CYCLE.** Every motorcycle and every motor scooter with less than 140 cubic centimeter piston displacement including motorized pedalcycles.

- 13-029** **MOTORIZED PEDALCYCLE.** A bicycle type vehicle, which has tires with an overall inflated diameter of 19 inches or more, with fully operative pedals for propulsion by human power, equipped with a power drive system that functions directly or automatically only and not requiring clutching or shifting by the operator after the drive system is engaged, and a helper motor with a cylinder capacity not exceeding 50 cubic centimeter piston displacement, which produces no more than 2.0 brake horsepower, and is capable of propelling the vehicle at a maximum speed of no more than 30 m.p.h. on level ground.
- 13-030** **MULTIPURPOSE PASSENGER VEHICLE.** A passenger-carrying vehicle which is constructed either on a truck chassis or with special features for occasional off-road operation.
- 13-031** **NON-COMMERCIAL VEHICLE.** Any vehicle that is not a commercial vehicle.
- 13-032** **NOT-FOR-HIRE.** Operation of a commercial vehicle in furtherance of any commercial or industrial enterprise but not For Hire.
- 13-033** **OFFICIAL TIME STANDARD.** Whenever certain hours are named herein they shall mean standard time or daylight-saving time as may be in current use in this City.
- 13-034** **OFFICIAL TRAFFIC-CONTROL DEVICES.** All signs, signals, markings, and devices placed or erected by authority of a public body or official having jurisdiction, for the purpose of regulating, warning or guiding traffic.
- 13-035** **ONE-WAY STREET.** A public way upon the roadway of which traffic is permitted to travel in only one direction.
- 13-036** **PARK OR PARKING.** Means the standing of a vehicle, whether occupied or not, otherwise than when temporarily and actually engaged in loading or unloading merchandise or passengers.
- 13-037** **PARKING METER.** A mechanical device located upon a public street or sidewalk in a place regularly designed as a parking zone as defined herein, which device shall record a certain number of minutes by the use of a clock mechanism determining the period of time for which parking privileges may be extended to the person depositing a coin into said device.
- 13-038** **Reserved.**
- 13-039** **PASSENGER CAR.** A motor vehicle of the First Division including a multipurpose passenger vehicle, that is designed for carrying not more than 10 persons.
- 13-040** **PEDESTRIAN.** Any person afoot.
- 13-041** **PERSON.** Every natural person, firm copartnership, association or corporation.
- 13-042** **PHYSICALLY HANDICAPPED PERSON.** Every natural person who has permanently lost the use of a leg or both legs or an arm or both arms or any combination thereof or any person who is so severely disabled as to be unable to move without the aid of crutches or a wheelchair.
- 13-043** **POLICE OFFICER.** Every officer authorized to direct or regulate traffic or to make arrests for violations of traffic regulations.

- 13-044 PRINCIPAL PLACE OF BUSINESS.** The place where any person transacts his principal business, or where he makes up and approves his payroll, maintains a central file of records and maintains his principal executive offices. In the event that not all of these functions are performed in one place, then that place where such person does in fact principally transact and control his business affairs.
- 13-045 PRIVATE LIVING COACH.** A recreational motor vehicle of the Second Division equipped and primarily used for living quarters, human habitation or for mobile living, rather than for the transportation of persons, with direct access to the living quarters from the driver's seat and not used as a commercial vehicle.
- 13-046 PRIVATE ROAD OR DRIVEWAY.** Every way or place in private ownership and used for vehicular travel by the owner, but not by other persons.
- 13-047 RAILROAD.** A carrier of persons or property upon cars, other than streetcars, operated upon stationary rails.
- 13-048 RAILROAD SIGNS OR SIGNALS.** Any sign, signal or device other than an official traffic-control device erected in accordance with the laws governing same and intended to give notice of the presence of railroad tracks or the approach of a railroad train.
- 13-049 RAILROAD TRAIN.** A steam engine, electric or other motor, with or without cars coupled thereto, operated upon rails, except streetcars.
- 13-050 RECREATIONAL VEHICLE.** Every vehicle originally designed or permanently converted and primarily used for living quarters or for human habitation and not used as a commercial vehicle, including any house car, house trailer, camper or private living coach.
- 13-051 RESIDENCE DISTRICT.** The territory contiguous to and including a highway not comprising a business district when the property on such highway for a distance of 300 feet or more is in the main improved with residence or residences and buildings in use for business.
- 13-052 RESIDENT.**  
(a) Every natural person who resides in this City shall be deemed a resident of the City.  
(b) In the case of a firm, copartnership, association, or corporation, if the principal place of business of such firm, copartnership, association, or corporation is located in the City of McHenry, Illinois, then such firm, copartnership, association or corporation shall be deemed a resident of the City of McHenry, Illinois.
- 13-053 RIGHT-OF-WAY.** The right of one vehicle or pedestrian to proceed in a lawful manner in preference to another vehicle or pedestrian approaching under such circumstances of direction, speed, and proximity as to give rise to danger of collision unless one grants precedence to the other.
- 13-054 ROADWAY.** That portion of a highway improved, designed, or ordinarily used for vehicular travel, exclusive of the berm or shoulder. In the event a highway includes two or more separate roadways, the term "roadway" as used herein shall refer to any such roadway separately but not to all such roadways collectively.

**13-055 SCHOOL BUS.**

(a) Every motor vehicle, except as provided in paragraph (b), owned or operated by or for any of the following entities for the transportation of persons regularly enrolled in any such entity as students in grade 12 or below in connection with any activity of the entity: a school operated by a religious institution or a public or private nursery, primary or secondary school.

(b) This definition does not include the following: (1) a bus operated by a public utility, municipal corporation or common carrier authorized to conduct local or interurban transportation or passengers when the bus is on a regularly scheduled route for the transportation of other fare paying passengers or furnishing charter service for the transportation of groups on field trips or other special trips or in connection with special events or for shuttle service between attendance centers or other educational facilities and not over a regular or customary school bus route; (2) A motor vehicle of the First Division.

**13-056 SEMI-TRAILER.** Every vehicle without motive power, other than a pole trailer, designed for carrying persons or property and for being drawn by a motor vehicle and so constructed that some part of its weight and that of its load rests upon or is carried by another vehicle.

**13-057 SIDEWALK.** That portion of a street between the curb lines, or the lateral lines of a roadway, and the adjacent property lines, intended for use by pedestrians.

**13-058 SITUS OR BASE OF VEHICLE.** The place where a vehicle is principally garaged, or from whence it is principally dispatched, or where the movements of such vehicle usually originate.

**13-059 STAND OR STANDING.** The halting of a vehicle, whether occupied or not, otherwise than when temporarily and actually engaged in receiving or discharging passengers.

**13-060 STOP.** When required means complete cessation from movement.

**13-061 STOP OR STOPPING.** Any halting even momentarily of a vehicle, whether occupied or not, except when necessary to avoid conflict with other traffic or in compliance with the directions of a police officer or traffic-control sign or signal.

**13-062 STREET.** The entire width between boundary lines of every way publicly maintained when any part thereof is open to the use of the public for purposes of vehicular travel.

**13-063 TAXICAB STAND.** A fixed area in the roadway alongside and parallel to the curb set aside for taxicabs to stand or wait for passengers.

**13-064 THROUGH HIGHWAY.** Every highway or portion thereof on which vehicular traffic is given preferential right-of-way, and at the entrances to which vehicular traffic from intersecting highways is required by law to yield right-of-way to vehicles on such through highway in obedience to either stop sign or a yield sign, when such signs are erected as provided in this Act.

**13-065 TRAFFIC.** Pedestrians, ridden or herded animals, vehicles, streetcars and other conveyances either singly or together while using any highway for purposes of travel.

**13-066 TRAFFIC-CONTROL SIGNAL.** Any official traffic control device, whether manually, electrically or mechanically operated, by which traffic is alternately directed to stop and permitted to proceed.

**13-067 TRUCK.** Every motor vehicle designed and used primarily for transportation of property.

- 13-068 TRUCK TRACTOR.** Every motor vehicle designed and used primarily for drawing other vehicles and not so constructed as to carry a load other than a part of the weight of the vehicle and load so drawn.
- 13-069 VEHICLE.** Every device, in, upon or by which any person or property is or may be transported or drawn upon a highway, except devices moved by human power, devices used exclusively upon stationary rails or tracks and snowmobiles. For this Act vehicles are divided into 2 divisions:  
 First Division: Those vehicles which are designed for the carrying of not more than 10 persons.  
 Second Division: Those vehicles which are designed for carrying more than 10 persons, those designed or used for living quarters and those vehicles which are designed for pulling or carrying property, freight or cargo, those vehicles of the First Division remodelled for use and used as motor vehicles of the Second Division, and those vehicles of the First Division used and registered as school buses.
- 13-070 YIELD RIGHT-OF-WAY.** When required by an official sign means the act of granting the privilege of the immediate use of the intersection roadway to traffic within the intersection and to vehicles approaching from the right or left, but when the roadway is clear may proceed into the intersection.
- 13-101 VEHICLE LICENSE REQUIRED.** Within thirty (30) days every motor vehicle registered with the Secretary of State to an address within the City or having established its situs or base within the City must display a license as herein provided. (MC-00-758)
- 13-102 VEHICLE LICENSE APPLICATION.** Any resident of the City of McHenry desiring a license for any such motor vehicle, shall file an application therefor with the City Clerk, upon a form provided by her, setting forth the name and address of the applicant, the description of the motor vehicle, and the state license number thereof, and such information as may be prescribed. Such license shall issue upon the payment by the applicant of a license fee, as hereinafter provided, to the City Clerk, and shall authorize the use of such motor vehicle within the City until the expiration of such license.
- 13-103 VEHICLE LICENSE FEES.** The license fee for each motor vehicle to be paid annually to the City Clerk shall be as follows:
- |  |         |
|--|---------|
| Ambulances, private . . . . .  | \$12.00 |
| Passenger vehicles for private use and trucks weighing<br>8,000 pounds or less . . . . .   | \$12.00 |
| Trucks and other freight and merchandise carrying<br>vehicles weighing 8,001 pounds or more and bearing<br>Illinois license plates suffixed "D" through "Z"<br>inclusive and all trucks bearing Illinois plates<br>with special designations . . . . . | \$30.00 |
| Motorcycles and motorized pedalcycles (MC-87-387) . . . . .  | \$ 9.00 |
| Public passenger vehicles and buses (except vehicles<br>otherwise designated as school buses) with a capacity<br>of over seven (7) persons . . . . .   | \$40.50 |
| Public passenger vehicles and buses (except vehicles<br>otherwise designated as school buses) with a capacity<br>of seven (7) persons or less . . . . .  | \$34.50 |
| Automobile dealer (for the first 5 vehicles) . . . . .   | \$60.00 |
| Automobile dealer (for each vehicle in excess of 5) . . . . .  | \$12.00 |
| School buses of all sizes and capacities<br>including not-for-profit vans used to transport<br>clients.(MC-97-697). . . . .  | \$15.00 |
| Replacement sticker (MC-87-395;MC-94-613) . . . . .  | \$ 2.25 |
- 13-104 VEHICLE LICENSE YEAR.** The license year was established as July 1, through June 30 per Ordinance No. MC-85-336 dated July 1, 1985.

**13-105 VEHICLE LICENSE TIME OF PAYMENT.**

(a) Payment of license fees for any license year shall be made from May 1 through June 30 of the license year and shall be deemed to be past due on July 1 of the license year.

(b) In addition to the fees provided in Section 13-203, on or after July 1 an additional late fee of \$3.00 per month for each month or fraction thereof shall be assessed and shall be based on the total number or months or fraction thereof that said purchase is made after July 1 of each year. (MC-94-613)

**13-106 VEHICLE LICENSE FEES REDUCED RATES.** Vehicle license fees as prescribed in Section 13-203 shall be reduced by 50% if the vehicle is newly acquired by a resident or becomes subject to license fees on or after January 1. (Effective 12-31-87, MC-85-339, 7-31-85)

**13-107 VEHICLE LICENSE TAG.** Upon the issuance of said license, the City Clerk shall deliver to the applicant a gummed sticker or metal tag upon which shall be shown the name of the class to which said motor vehicle belongs and the year for which the said license is issued, and it shall be the duty of the applicant to affix such gummed sticker or metal tag upon the motor vehicle for which it is issued as prescribed in Section 13-108.

**13-108 VEHICLE LICENSE DISPLAY OF CITY LICENSE TAG.** The City license tag shall be placed and positioned to be clearly visible and maintained in a clearly legible condition and shall be placed on the front windshield in the lower right hand corner farthest removed from the driver's position approximately one (1) inch from the right and lower edge of said windshield, except application of the metal tag issued to motorcycles, or motorized pedalcycles shall be made in a permanent manner to the rear license plate of such motorcycle or motorized pedalcycle so as not to obstruct any part of the number of such license plate.

**13-109 VEHICLE LICENSE REQUIRED FOLLOWING SALE OR TRANSFER OF VEHICLE.** Immediately upon the sale or transfer of any motor vehicle which has been licensed as above, the vender shall remove the license sticker or tag from the motor vehicle sold or transferred, and the license so issued for such motor vehicle shall cease to apply to said motor vehicle from such date, and the purchaser or transferee thereof shall apply to the City Clerk for new license therefor as above provided.

Upon a showing to the City Clerk that said sticker or tag has been removed from such sold or transferred motor vehicle, the City Clerk shall, upon payment of a replacement fee, issue a new sticker or tag bearing a new number, which shall apply to and be assigned to any other motor vehicle of the same class owned by said vendor or transfer or; except as above provided, no sticker or tag issued for or assigned to any motor vehicle shall ever be used for or attached to or upon another and different vehicle.

**13-110 VEHICLE LICENSE USE OF FUND.** The proceeds of all license fees so collected shall be used for the purpose of improving, paving, repairing or maintaining the streets and other public roadways within the City, and shall never be devoted to any other use whatever, provided that the actual cost of collection of such fees and the distribution thereof may be deducted from the total amount collected.

**Article II****SPEED RESTRICTIONS**

**13-201 SPEED LIMITS ESTABLISHED.** The speed limit on all streets and highways within the corporate limits of the City of McHenry is hereby established at 25 miles per hour, with the following exceptions:

1. The speed limit in all alleys within the corporate limits of the City of McHenry is hereby established at 10 miles per hour
2. A speed limit of 20 miles per hour is hereby established in the following areas:
  - a. All park roads;
  - b. Riverside Drive - from the north side of Boone Creek to Pearl Street (MC-97-670);
  - c. Main Street - Crystal Lake Road to Front Street;
  - d. Green Street - Pearl Street to Waukegan;
  - e. Oak Drive - north from Orleans Street to Prairie Avenue;
  - f. Municipal Center Driveway - along the entire length; (MC-91-564)
  - g. Kresswood Drive – along its entire length (MC-04-843)
3. A speed limit of 30 miles per hour is hereby established in the following areas.
  - a. Green Street - Anne Street to Bull Valley Road; (MC-95-638)
  - b. Elm Street-IL Route 120 - from Front Royal Drive to Charles Street;(MC-96-644)
  - c. Front Street - Elm Street to Kane Avenue;
  - d. Crystal Lake Road - IL Route 120 to Lillian street.
  - e. McCullom Lake Road within the corporate limits (MC-99-722)
  - f. Riverside Drive - that portion of Riverside Drive which is located in the City between Orchard Beach Road and Kama Avenue (MC-97-682)
  - g. Municipal Drive for its entire length between Knox Drive and Green Street (MC-08-956)
  - h. Cunat Drive – from Bull Valley Road to Crystal Lake Road (MC-09-990)
4. A speed limit of 35 miles per hour is hereby established in the following areas:
  - a. Crystal Lake Road - Lillian Street to Bull Valley Road; (MC-95-638)
  - b. Richmond Road - Elm St. to a point 500 feet north of Maple Avenue;
  - c. Westbound IL Route 120 - Front Royal Drive to a point 500 feet west of Beach Avenue;
  - d. Eastbound IL Route 120 - Beach Avenue to Front Royal Drive;
  - e. Martin Road - Ringwood Road to IL Route 120;
  - f. Ringwood Road - IL Route 120 north to Shore Drive. (MC-91-552)
  - g. Curran Road - IL Route 120 south to the City limits; (MC-05-869)
  - h. Green Street - from Bull Valley Road south to the southern corporate limits (MC-95-638; MC-97-682; MC-09-992)
  - i. Elm Street-IL Route 120 - from Charles St to east property line of 2804 Elm St (for eastbound traffic). (MC-95-644)
  - j. Elm Street-IL Route 120 - from east property line of 2803 Elm St (for westbound traffic) to Charles St. (MC-96-644)
5. A speed limit of 40 miles per hour is hereby established in the following areas:

- a. Front Street - Kane Avenue to Anne Street;
- b. Richmond Road - from a point 500 feet north of Maple Avenue to McCullom Lake Road;
- c. Curran Road – from a point located at the northeast corner of Section 32 and the northwest corner of Section 33 south to Bull Valley Road; (MC-05-869)
- d. Elm Street-IL Route 120 - from east property line of 2803 Elm St to Chapel Hill Road (eastbound traffic). (MC-96-644)
- e. Elm Street-IL Route 120 - from Chapel Hill Rd to east property line of 2804 Elm St (westbound traffic). (MC-96-644)

6. A speed limit of 45 miles per hour is hereby established in the following areas:

- a. Reserved. (MC-99-722);
- b. Reserved. (MC-95-638)
- c. Front Street - Anne St to 1000 feet south of High St;
- d. Westbound IL Route 120 from a point 500 feet west of Park Street to Dot Street;
- e. Bull Valley Road from Lawrence Parkway to IL State Route 31.
- f. Bull Valley Road from the western City limits to Crystal Lake Road. (MC-87-422)

7. A speed limit of 50 miles per hour is hereby established in the following areas:

- a. Front Street - 1000 feet south of High Street to south City limits.

8. A speed limit of 55 miles per hour is hereby established in the following areas:

- a. IL Route 120 - Dot Street to west City limits;
- b. Richmond Road - McCullom Lake Rd to north City limits;
- c. Ringwood Road - Martin Road north to the corporate limits of the City. (MC-91-552)

**13-202 SCHOOL SPEED ZONES ESTABLISHED.**

School speed zones are hereby established in the following areas:

- 1. Crystal Lake Road - 300 feet north of Kensington Avenue to Royal Drive;
- 2. Front Street - 300 feet north of Kane Avenue to 300 feet south of Kane Avenue;
- 3. IL State Route 120 - 300 feet east of Beach Avenue to 300 feet west of Beach Avenue;
- 4. Richmond Road - Maple Avenue to Elm Street;
- 5. Washington Street - Richmond Road to Park Street;
- 6. Green Street - Anne Street to 100 feet north of Kane Avenue;
- 7. Green Street - John Street to Waukegan Road;
- 8. Kane Avenue - Green Street to Front Street;
- 9. Waukegan Road - Third Street to the east boundary of McHenry High School east campus;
- 10. John Street - Green Street to the western edge of McHenry Country Club.
- 11. Driftwood - Courtland Trail to Glenbrook Trail. (MC-90-526; MC-93-592)
- 12. Crystal Lake Road - Glenbrook Trail to Malibu Court.
- 13. Winding Creek Drive - Crystal Lake Road to Driftwood Trail.
- 14. Glenbrook Trail - Crystal Lake Road to Cross Trail.
- 15. Cross Trail - Glenbrook Trail to Courtland Trail.
- 16. Courtland Trail-Cross Trail to Driftwood Trail.(MC-93-592)

**ARTICLE III**

**13-301 ONE-WAY STREETS.** It is unlawful to operate any vehicle on any of the designated streets or alleys in any direction other than that indicated in this Section 13-301.

**ONE-WAY STREET**

Roadway adjoining 1237 N. Green St. on the north and 1225 N. Green St. on the south between Green St. and the Municipal Parking Lot

**TRAFFIC DIRECTION**

Westbound

Traffic Lane on Riverside Drive Municipal Parking Lot

Southbound.

**ARTICLE IV  
SPECIAL RESTRICTIONS**

**13-401 RIGHT TURN ONLY LANES.** It shall be unlawful for the operator of any vehicle to drive such vehicle in any designated "Right Turn Only" lane except for making a right turn. The following lanes are designated as "Right Turn Only" lanes:

Northbound curb lane on Green Street at Elm Street. Southbound curb lane on Green Street at Elm Street. Riverside Drive Parking Lot Exit at Elm Street. (MC-85-333, MC-91-563)

**13-402 NO LEFT TURNS.**

- a. It shall be unlawful for the operator of any vehicle (EXCEPT THOSE IN A FUNERAL PROCESSION) to make a left-hand turn from the northbound or southbound lanes of Green Street onto Elm Street during the hours of 7:00 a.m. until 7:00 p.m. (MC99-734; MC99-738)
- b. It shall be unlawful for the operator of any vehicle to make a left-hand turn from John Street onto Allen Avenue during the hours of 2 p.m. until 4 p.m. on School Days Only. MC-01-783;MC05-876)

**ARTICLE V  
SPECIAL STOPS REQUIRED**

**13-501 STOP STREETS ESTABLISHED.** It shall be unlawful for the operator of any vehicle being operated on any of the streets hereinafter listed in the column designated "Stop Street" to drive such vehicle into the intersection with the street listed opposite it in the column designated "Intersecting Street", without first bringing such vehicle to a full stop.

***Stop Street***

Abbey Drive (NB)  
 Abbington Drive  
 Abbington Drive  
 Adams Drive (SB)  
 Albany Street (WB)  
 Albert Dr (WB)  
 Allen Avenue  
 Allen Avenue  
 Almond Lane (WB)  
 Amherst Ct (WB)  
 Anne Street (EB/WB)  
 Anne Street  
 Anne Street  
 April Ave (EB)  
 Arbor Drive (WB)  
 Arbor Drive (WB)  
 Armstead Ln (NB)  
 Ashland Drive  
 Ashland Drive  
 Ashley Drive  
 Ashley Drive  
 Augusta Drive  
 August Drive  
 Ayre Drive (NB)  
 Bally (NB)  
 Baltimore St (NB)  
 Bank Drive (EB)  
 Bank Drive (WB)  
 Barkley Court (EB)  
 Barney Court (EB)  
 Barnwood Trail  
 Bauer Road (SB)  
 Beach Avenue  
 Beach Avenue (NB/SB)  
 Beach Avenue (NB/SB)  
 Beach Drive (EB/WB)  
 Beach Drive (EB/WB)  
 Belden (SB)  
 Bennington (SB)  
 Betsy Ln (SB)  
 Birch Lane (NB/SB)  
 Biscayne (EB/WB)  
 Biscayne (EB/WB)  
 Biscayne (EB)  
 Biscayne (EB/WB)  
 Bonita (NB/SB)  
 Bonner Drive  
 Bonner Drive (EB/WB)  
 Bonnie Brae Dr (SB)  
 Bonnie Brae Dr (NB)  
 Boone Creek Circle (EB)  
 Boone Creek Circle (NB)  
 Borden Street  
 Borden Street (NB/SB)  
 Bradley Court (NB?SB)  
 Bretons Drive (WB)  
 Bretons Drive (EB)  
 Bretons Drive (EB/WB)  
 Brighton Pl (WB)  
 Brittany Drive  
 Brittany Drive  
 Broad Street (EB/WB)  
 Broad Street (EB/WB)  
 Broad Street (EB/WB)  
 Broad Street  
 Broad Street

***Intersecting Street***

Winding Creek Drive  
 Dartmoor Dr  
 Greenbrier Drive  
 Route 120 (MC-00-755)  
 Front Street (MC-93-605)  
 Whiting Dr (MC-08-963)  
 Green Street  
 John Street  
 Hazelwood Drive  
 Bennington Ln (MC-08-963)  
 Dale Avenue  
 Front Street  
 Green Street  
 Whiteoak Dr (MC-08-963)  
 Hemlock Drive (MC-06-881)  
 Riverside Drive (MC-06-881)  
 Cunat Dr (MC-08-963)  
 Cambridge Drive  
 Abbington Drive  
 Chesterfield Drive  
 Front Royal Drive  
 Dartmoor Drive  
 Greenbrier Drive  
 Wexford Drive (MC-04-839)  
 Bull Valley  
 Cunat Dr (MC-08-963)  
 Knox Drive (MC-08-956)  
 Route 31 (MC-08-956)  
 Highbridge Trail (mC-00-755)  
 Adams Drive (MC-00-755)  
 Courtland Trail (MC-00-752)  
 Bretons Drive (MC-87-431)  
 Shore Drive  
 IL State Route 120  
 Bonner Drive  
 Broadway  
 Hilltop  
 Albany  
 Martin Road (MC-91-554)  
 Cunat Dr (MC-08-963)  
 Chestnut Drive (MC-97-686)  
 Barreville (MC-91-554)  
 Bonita (MC-97-680)  
 Broadway  
 Hilltop Blvd.  
 Biscayne  
 Beach Avenue  
 Meadow Lane  
 Foxview Highland Dr (MC-08-963)  
 Sunrise View  
 Leonard Street (MC-98-710)  
 Olde Mill Lane (MC-98-710)  
 Main Street  
 IL State Rte 120 (Elm St.)  
 Orleans Street  
     Green Street (MC-87-428)  
 Ronda Road (MC97-668)  
 Valley Road (MC-89-506)  
 Amberwood Pl (MC-08-963)  
 Sherman Drive  
 Ringwood Road  
 Court Street  
 Park Street  
 Green Street  
 Richmond Road  
 Riverside Drive

**Stop Street**

Broadway (NB)  
 Broadway (NB/SB)  
 Broadway (NB/SB)  
 Broadway (NB/SB)  
 Bromley Court  
 Bromley Court  
 Brookwood Trail (NB)  
 Brookwood Trail (SB)  
 Brookwood Trail (NB/SB)  
 Brown Street  
 Brown Street  
 Bull Valley Road (EB/WB)  
 Burning Tree Circle (WB)  
 Burning Tree Drive (WB)  
 Bush Tr (EB)  
 Callista Avenue  
 Callista Avenue (EB/WB)  
 Callista Avenue  
 Callista Avenue (EB/WB)  
 Cambridge Drive  
 Cambridge Drive  
 Camden St (NB)  
 Camden St (SB)  
 Canterbury Drive  
 Canterbury Drive  
 Capital Drive (NB/WB)  
 Carey Drive (NB)  
 Carey Drive (SB)  
 Carol (NB)  
 Carriage Trail (NB/SB)  
 Carrick Lane (EB)  
 Carter Ct (NB)  
 Cartwright Trail (NB)  
 Cartwright Trail (SB)  
 Cashel Ln (EB)  
 Cashel Ln (SB)  
 Castlewood Trail (SB)  
 Centegra Dr (WB)  
 Center Street  
 Center Street (NB/SB)  
 Center Street (NB/SB)  
 Center Street  
 Central Street  
 Central Street  
 Charles Street (SB)  
 Charlotte Avenue  
 Charlotte Avenue  
 Charmin Ln (EB)  
 Charmin Ln (WB)  
 Chasefield Circle (S Intersection WB)  
 Cherryhill Ct (NB)  
 Chesterfield Court  
 Chesterfield Drive  
 Chesterfield Drive  
 Chestnut Drive (SB)  
 Chestnut Lane (WB)  
 Chickaloon Drive  
 Church Street  
 Clearbrook Avenue  
 Clearbrook Avenue  
 Clearview Avenue  
 Clearview Avenue  
 Clinton Ct (NB)  
 Clover Avenue  
 Clover Avenue  
 Clover Avenue (EB/WB)  
 Cobbler Crossing (SB)  
 Cobblestone Trail (EB)  
 Cobblestone Trail (EB/WB)  
 Cobblestone Tr (WB)

**Intersecting Street**

Bull Valley  
 Biscayne Road (MC-98-707)  
 Stillhill  
 Sunrise View  
 Dartmoor Drive  
 Kensington Drive  
 Abbey Drive  
 Bull Valley Road  
 Windhaven Trail (MC-87-421)  
 Prestwick Street  
 Orleans Street  
 Crystal Lake Road  
 Eagle Point Drive (MC-00-755)  
 Ridge Road (MC-00-755)  
 Reagan Blvd (MC-08-963)  
 Crestwood Street  
 Ponca Street  
 Sioux Lane  
 South Street  
     Abbington Drive  
 Windridge Drive  
 Cunat Dr (MC-08-963)  
 Yorktown St (MC-08-963)  
 Augusta Drive  
 Greenbrier Drive  
 Ridgeview Drive (MC-98-710)  
     Biscayne Road (MC-02-801)  
 Forest Road (MC-02-801)  
 Stillhill  
 Winding Creek Drive (MC-00-752)  
 Draper Road (MC-09-991)  
 Tyler Tr (MC-08-963)  
 Cobblestone Trail (MC-01-787)  
 Dartmoor Drive (MC-01-787)  
 Doolin Ave (MC-08-963)  
 Murphy Dr (MC-08-963)  
 Cartwright Trail (MC-01-787)  
 Ridgeview Dr (MC-08-963)  
 Grove  
 John Street  
 Kane Avenue  
 Main Street  
 Prairie Avenue  
 Shore Drive  
 IL Route 120 (MC-96-644)  
 Country Club Drive  
 John Street  
 Murphy Dr (MC-08-963)  
     Veterans Parkway  
 Creekside Trail  
 Whiting Dr (MC-08-963)  
     Chesterfield Drive  
     Oakwood Drive  
     Royal Drive  
 McCullom Lake Road (MC-00-755)  
 Pine Drive (MC-96-665)  
 Draper Road  
 Grand Avenue  
 Millstream Drive  
 North Drive  
     Oak Drive  
     Eastern Avenue  
 Tyler Tr (MC-08-963)  
 Dale Avenue  
 Green Street  
 Timothy Lane  
 Remington Tr (MC-08-963)  
 Whitmore Trail (MC-01-787)  
 Wedgewood Trail (MC-01-787)  
 Winbleton Tr (MC-08-963)

**Stop Street**

Colony Trail (SB)  
 Colony Trail  
 Colony Trail (NB)  
 Commercial Avenue  
 Commercial Avenue  
 Concord Dr (NB)  
 Concord Dr (NB)  
 Conway Cir (WB - BOTH)  
 Cork Lane (NB)  
 Cork Lane (WB)  
 Court Street (WB)  
 Cornell Court  
 Corporate Drive (SB)  
 Court Street (NB/SB)  
 Court Street (NB/SB)  
 Court Street  
 Courtland Trail  
 Courtland Trail (WB)  
 Courtland Trail  
 Creekside Lane (both intersections)  
 Creekside Trail (NB/SB)  
 Creekside Trail (EB)  
 Creekside Trail (SB)  
 Crescent Ave (EB/WB & NB/SB)  
 Crestwood Street  
 Crestwood Street  
 Crooked Tree Court (SB)  
 Cross Trail (NB/SB)  
 Cross Trail (NB/SB)  
 Cross Trail (NB)  
 Cross Trail (NB/SB)  
 Crystal Trail  
 Crystal Trail  
 Cumberland Circle (SB/EB)  
 Cunat Dr (WB)  
 Cunat Dr (NB)  
 Curran Road  
 Dale Avenue (NB)  
 Dale Avenue (NB/SB)  
 Dartmoor Drive (WB/EB)  
 Dartmoor Drive (EB/WB)  
 Dartmoor Drive (EB/WB)  
 Dartmoor Drive (WB)  
 Dartmoor Drive (EB/WB)  
 Dartmoor Drive (EB/WB)  
 Dayton (WB)  
 Deer Run Trail (SB)  
 Dear Run Trail (EB)  
 Deerwood Trail (WB)  
 Denali Trail  
 DePaul Court (SB)  
 Devonshire Court  
 Doherty Ln (EB)  
 Doherty Ln (SB)  
 Donegal Court (SB)  
 Donegal Lane (WB)  
 Donnelly Place (NB/SB)  
 Donovan Court  
 Donovan Street  
 Doolin Ave (NB)  
 Dot Street  
 Drake Court  
 Draper Road (WB)  
 Draper Road (WB)  
 Driftwood Trail  
 Driftwood (NB/SB)  
 Driftwood (NB/SB)  
 Driveway Exits from Hospital Parking Lots  
 Dublin Court (WB)  
 Dundalk Ln (EB)  
 Dundalk Ln (SB)

**Intersecting Street**

Deerwood Trail (MC-00-755)  
 Glenbrook Trail (MC-00-752)  
 Timber Trail (MC-00-755)  
 Meadow Lane  
 Highview Avenue  
 Savoy Ln (MC-08-963)  
 Veterans Parkway (MC-08-963)  
 Doolin Ave (MC-08-963)  
 Dartmoor Drive (MC-04-839)  
 Farmstead Drive (MC-04-839)  
 Pine Street (MC-98-710)  
 Orleans Street  
 Prime Parkway (MC-94-632)  
 Elm Street  
 Pearl Street  
 Washington Street  
 Cross Trail (MC-00-752)  
 Driftwood Court (MC-94-633)  
 Driftwood Trail (MC-00-752)  
 Scully Drive  
 Greenbrier Drive (MC-00-762)  
 Huntington Drive  
 Winding Creek Drive  
     John Street  
 Lillian Street  
 Mill Street  
 Olde Mill Lane (MC-98-710)  
 Dartmoor Drive (MC-98-710; MC-02-805)  
 Glenbrook Trail (MC-00-752)  
 Loyola Drive (MC-98-710)  
 Oregon Trail (MC-02-813Crystal Lake Road (SB)  
 Cross Trail (MC-00-752)  
 Glenbrook Trail (MC-00-752)  
 Ashley Drive  
 Crystal Lake Rd (MC-08-963)  
 Bull Valley Rd (MC-09-991)  
 Draper Road  
 Anne Street  
     High Street  
 Cross Trail (MC-02-813)  
 Crystal Lake Road (MC-98-710)  
 Curran Road (MC-98-710; MC-04-839)  
 Farmstead Drive (MC-04-839)  
 Thornwood Drive (MC-92-575)  
 Waters Edge Drive (MC-99-743)  
 IL State Route 31  
 Deerwood Trail (MC-00-755)  
 Silver Glen Road (MC-00-755)  
 Ridge Road (MC-00-755)  
 Chickaloon Drive  
 Loyola Drive (MC-98-710)  
 Waters Edge Drive  
 Doolin Ave (MC-08-963)  
 Flynn St (MC-08-963)  
 Donegal Lane (MC-04-839)  
 Tralee Lane (MC-04-839)  
 Pebble Creek Drive (MC-98-710)  
 Orleans (MC-88-472)  
 Orleans (MC-88-450)  
 Veterans Parkway (MC-08-963)  
 IL State Route 120  
 Orleans Street  
 Carrick Lane (MC-09-991)  
 Curran Road (MC-09-991)  
 Barnwood Trail (MC-00-752)  
 Glenbrook Trail (MC-90-526)  
 Winding Creek Drive (MC-90-526)  
 Medical Center Drive  
 Draper Road (both intersections) MC-09-991  
 Doolin Ave (MC-08-963)  
 Murphy Dr (MC-08-963)

**Stop Street**

Eagle Point (NB)  
 Eaglewood Trail (EB)  
 Eaglewood Trail (EB)  
 Eastern Avenue  
 Eastern Avenue  
 Eisenhower Blvd (WB/NB)  
 Enfield Dr (SB)  
 Essex Court  
 Fairfax Drive (SB)  
 Fairfax Drive (NB)  
 Fairway Drive  
 Fairway Drive (EB/WB)  
 Farmstead Drive (WB)  
 Farrington Drive  
 Farrington Drive  
 Fieldstone Trail (WB)  
 Fieldstone Trail (WB)  
 Florence Blvd (EB)  
 Florence Blvd (WB)  
 Flower Street  
 Flower Street  
 Flower Street (NB/SB)  
 Flower Street  
 Flower Street  
 Forest (WB)  
 Fourth Street  
 Fourth Street (NB/SB)  
 Fourth Street  
 Foxview Highland Dr (WB)  
 Freund Avenue  
 Freund Avenue  
 Freund Avenue (EB)  
 Front Street  
 Front Royal Court  
 Front Royal Drive (SB)  
 Front Royal Drive (EB/WB)  
 Front Royal Drive  
 Garden Quarter Road  
 Geneva Pl (WB)  
 Geneva Pl (EB)  
 Gladstone DR (NB)  
 Gladstone Dr (SB)  
 Glenbrook Trail  
 Glenbrook Trail (WB)  
 Glenbrook Trail (NB)  
 Glenbrook Trail (EB/WB)  
 Glen Drive  
 Golfview (both intersections)  
 Grand Avenue  
 Grand Avenue  
 Grand Avenue  
 Graue Mill Court (NB)  
 Green Street (NB/SB)  
 Green Street (NB/SB)  
 Green Street  
 Green Street (NB/SB)  
 Greenbrier Drive (EB/WB)  
 Greenbrier Drive (NB)  
 Greenbrier Drive  
 Greendale Court (WB)  
 Gregg (NB)  
 Grove Avenue (EB/WB)  
 Hampton Court  
 Hampton Court  
 Hanley Street  
 Hanley Street  
 Hanson Ave (NB)  
 Hanson Ave (SB)  
 Hartland Trail  
 Hartland Trail

**Intersecting Street**

Burning Tree Circle (MC-00-755)  
 Highbridge Trail (MC-00-755)  
 Newport Trail (MC-98-710)  
 Prairie Avenue  
 Shore Drive  
 Tyler Tr (MC-08-963)  
 Murphy Dr (MC-08-963)  
 Chesterfield Drive  
 Abbey Drive  
 Winding Creek Drive  
 Green Street  
 Valley Road (MC-94-611)  
 Draper Road (MC-04-839)  
 Canterbury  
 Windridge Drive  
 Newport Trail (MC-98-710)  
 Whitmore Drive (MC-98-710)  
 Ringwood Road (MC-91-554)  
 Whiting Dr (MC-08-963)  
 Home Avenue  
 Prairie Avenue  
 Ramble Road  
 Shore Drive  
 Willow Lane  
 Barreville  
 James Street  
 John Street  
 Main Street  
 Hilltop Blvd (MC-08-963)  
 IL State Route 120 (Elm Street)  
 Maple Avenue  
 Church Street  
 West Street  
 Front Royal Drive  
 Chesterfield Drive  
 Hanley Street  
 IL State Route 120 (Elm Street)  
 Hanley Street  
 Amberwood Pl (MC-08-963)  
 Donnelly Pl (MC-08-963)  
 Centegra Dr (MC-08-963)  
 Shamrock Ln (MC-08-963)  
 Cross Trail (MC-00-752)  
 Crystal Lake Road (MC-89-594)  
 Dartmoor Drive (MC-02-808)  
 Driftwood Trail (MC-93-592)  
 Bonner Drive  
 John Street  
 Freund Avenue  
 Millstream Drive  
 Richmond Road  
 Spring Creek Lane (MC-98-710)  
 John Street  
 Pearl Street  
 Washington Street  
 Waukegan Road  
 Augusta Drive (MC-92-575)  
 Creekside Drive (MC-88-467)  
 Crystal Lake Road  
 Loyola Drive (MC-02-808)  
 Bull Valley Road  
 Center Street  
 Chesterfield Drive  
 Chesterfield Drive and Ashley Drive  
 Crystal Lake Road  
 Front Royal Drive  
 Cunat Dr (MC-08-963)  
 Madison Ave/Monroe Ave (MC-08-963)  
 Glenbrook Trail (MC-00-752)  
 Village Trail (MC-00-752)

**Stop Street**

Hayward Ct (EB)  
 Hazelwood DR (NB)  
 Hazelwood Lane (EB)  
 Hemlock Drive (NB)  
 Hemlock Drive (WB)  
 Heritage Drive (NB)  
 Heritage Drive (SB)  
 Highbridge Trail (SB)  
 Highbridge Trail (NB)  
 High Street  
 High Street  
 Highview Avenue  
 Highview Avenue (NB/SB)  
 Highview Avenue  
 Highview Avenue  
 Highview Avenue  
 Hillside Ln (NB)  
 Hillside Lane (SB)  
 Hillside Lane (SB)  
 Hilltop (NB/SB)  
 Hilltop (NB)  
 Hilltop (SB)  
 Hollywood Blvd (NB/SB)  
 Hollywood Blvd (SB)  
 Holy Apostles Access Road (SB)  
 Home Avenue (EB/WB)  
 Home Avenue  
 Home Avenue (EB/WB)  
 Home Avenue (EB/WB)  
 Hoover Tr (NB/SB)  
 Hoover Tr (NB)  
 Hunter Path (EB)  
 Hunter Path (WB)  
 Huntington Drive (NB)  
 Huntington Drive (SB)  
 Huntington Drive (NB/SB)  
 Illiamna Trail  
 Independence Court (EB)  
 Industrial Drive (EB-WB)  
 Inverness Trail (NB)  
 Inverness Trail (SB)  
 James Street  
 James Street  
 Jefferson Ave (NB)  
 Jefferson Ave (SB)  
 Jennifer Ln. (SB/NB)  
 Jennifer Ln.  
 John Street (EB/WB)  
 John Street (NB/SB)  
 John Street (EB/WB)  
 John Street  
 Jordan Court (EB)  
 Joyce Court (EB)  
 Joyce Lane (EB/WB)  
 Joyce Lane (NB/SB)  
 Joyce Lane (NB)  
 Judy Lane  
 Kane Avenue  
 Kane Avenue (EB/WB)  
 Kane Avenue  
 Katie Lane (EB)  
 Katie Lane (NB)  
 Katmai Trail  
 Kenmare Ln (EB)  
 Kenmare Ln (SB)  
 Kennedy Drive (EB)  
 Kennedy Drive (NB)  
 Kennedy Drive (SB)

**Intersecting Street**

Matanuska Tr (MC-08-963)  
 Almond Ln (MC-08-963)  
 Riverside Drive (MC-00-755)  
 Arbor Drive (MC-06-881)  
 Kennedy Drive (MC-06-881)  
 Greenbrier Drive  
 Winding Creek Drive  
 Eaglewood Trail (MC-00-755)  
     Jordan Court (MC-00-755)  
     Front Street  
     Timothy Lane  
 IL State Route 120 (Elm Street)  
 Home Avenue  
 Prairie Avenue  
 Shore Drive  
 Willow Lane  
 Eisenhower Blvd (MC-08-963)  
 IL Route 120 (MC-96-644)  
 Lincoln Road (MC-06-897)  
 Biscayne  
 Bull Valley Road  
 Pleasant View  
 Biscayne  
 Forest Rd (MC-08-963)  
 Cunat Dr (MC-08-963)  
 Beach Avenue  
 Meadow Lane  
 Parklane Ave  
 Ramble Road  
 Polk Tr (MC-08-963)  
 Tyler Tr (MC-08-963)  
 Broadway  
 Hilltop  
 Dartmoor Drive  
 Greenbrier Drive  
 Sarasota Drive (MC-85-340;MC-86-361)  
 Denali Trail  
 Highbridge Trail (MC-00-755)  
 Oak Drive (MC97-674)  
 Dartmoor Drive (MC-00-755)  
 Eaglewood Trail (MC-00-755)  
 Center Street  
 Green Street  
 Cunat Dr (MC-08-963)  
 Monroe Ave (MC-08-963)  
 Orleans (MC-88-450;Mc-88-472)  
 Prestwick  
 Center Street (MC-97-668)  
 Crescent Avenue  
 Green Street  
 Front Street  
 Highbridge Trail (MC-00-755)  
 Oakton Street/Joyce Lane (MC-00-755)  
 Cross Trail (MC-02-810)  
 Dartmoor Drive (MC-02-808)  
 Loyola Drive (MC-02-808)  
 John Street  
 Green Street  
 Center Street  
 Front Street  
 Ronda Road (MC-97-668)  
 Turnberry Drive (MC-97-677)  
 Chickaloon Drive  
 Doolin Ave (MC-08-963)  
 Murphy Dr (MC-08-963)  
 Hemlock Drive (MC-06-881)  
 McCullom Lake Road (MC-06-881)  
 McCullom Lake Road (MC-06-881)

**Stop Street**

Kensington Drive  
 Kensington Drive (WB)  
 Kensington Drive  
 Kensington Drive (SB)  
 Kensington Dr. (WB)  
 Kensington Drive  
 Key Ln (EB/WB)  
 Kinley (WB)  
 Kinley (EB/WB)  
 Kinley (EB)  
 Kinsale Lane (EB)  
 Knoll Avenue  
 Knoll Avenue  
 Knoll Avenue  
 Knoll Avenue  
 Knox Drive (NB)  
 Lakeland Avenue  
 Lakeland Avenue  
 Lakewood Avenue  
 Lakewood Avenue  
 Lakewood Avenue (NB/SB)  
 Lakewood Road (NB)  
 Lakewood Road  
 Landcaster Circle (EB both)  
 Landings Court (WB)  
 Larkin Lane (WB)  
 Lauren Court  
 Lawn Court  
 Lawrence Parkway  
 Lawrence Parkway  
 Lee Street  
 Lee Street (EB)  
 Legend Lane (SB)  
 Leonard Street (NB)  
 Leonard Street (NB/SB)  
 Leonard Street (SB)  
 Lexington Street (WB)  
 Lexington Street (NB)  
 Lillian Street  
 Lillian Street (EB/WB)  
 Limerick Lane (SB)  
 Linda Road  
 Linda Road (SB)  
 Loch Glen Lane (NB)  
 Logan Avenue  
 London Trail (NB)  
 Longford Drive (WB)  
 Lorient Drive (WB)  
 Lorient Drive (EB)  
 Lorient Drive (EB/WB)  
 Loyola Drive (NB/SB)  
 Loyola Drive (SB)  
 Madison Ave (NB)  
 Main Street (WB)  
 Main Street  
 Main Street (EB/WB)  
 Malibu Court (EB)  
 Malibu Court (WB)  
 Maple Avenue  
 Manchester Mall  
 Martin Road  
 Martin Road  
 Matanuska Trail  
 McCullom Lake Road (EB)  
 McCullom Lake Road (WB)  
 McHenry (NB)  
 McHenry (NB/SB)  
 McHenry (SB)  
 McHenry Country Club Exit

**Intersecting Street**

Crystal Lake Road  
 Kensington Drive  
 Oakwood Drive  
 Stratford Court  
 Stratford Court (W intersection) (MC-86-371)  
 Waters Edge Drive  
 Cunat Dr (MC-08-963)  
 Hilltop  
 Broadway  
 Riverside Drive  
 Carrick Lane (MC-09-991)  
 Home Avenue  
 Prairie Avenue  
 Shore Drive  
 Willow Lane  
 Park Place (MC-08-956)  
 Home Avenue  
 Ramble Road  
 Home Avenue  
 Shore Drive  
 Willow Lane  
 McCullom Lake Road (MC-88-470)  
 Petersen Park Road  
 Whitmore Trail (MC-01-787)  
 Olde Mill Lane (MC-98-710)  
 Green Street (MC-01-773)  
 Orleans (MC-88-472)  
 Bonner Drive  
 Bull Valley Road  
 Medical Center Drive  
 Dale Avenue  
 Timothy Street (MC-85-340)  
 Dartmoor Drive (MC-06-898)  
 Olde Mill Lane (MC-98-710)  
 Orleans Street (MC-88-450; MC-88-472)  
 Prestwick Street (MC-94-619)  
     Baltimore St (MC-08-963)  
 Cunat DR (MC-08-963)  
 Crystal Lake Road  
 Sioux Lane  
 Shannon Drive (MC-04-839)  
 Fairway Drive  
 Skyway Drive (MC-87-428)  
 Turnberry Drive (MC-97-677)  
 Crestwood Street  
 Cobblestone Trail (MC-01-787)  
 Farmstead Drive (MC-04-839)  
 Bauer Road (MC-87-431)  
 Ronda Road (MC-97-668)  
 Valley Road (MC-90-542)  
 Dartmoor Drive (MC-98-710; MC-00-755)  
 Joyce Lane (MC-00-755)  
 Cunat Dr (MC-08-963)  
 Crystal Lake Road (MC-85-340)  
 Green Street  
 Front Street  
 Crystal Lake Road (MC-88-446)  
 Heritage Drive  
 Richmond Road  
 Front Royal Drive  
 IL State Route 120  
 Ringwood Road  
 Chickaloon Drive  
 Riverside Drive (MC-87-421)  
 Riverside Drive (MC-06-881)  
 Bull Valley Road  
 Miller Drive  
 Stillhill Drive  
 John Street

**Stop Street**

Meadow Lane (NB)  
 Meadow Lane (SB)  
 Meadow Lane (WB)  
 Meadow Lane (NB/SB)  
 Medical Center Drive (WB)  
 Medical Center Drive (EB/WB)  
 Medical Center Drive  
 Medical Center Drive (WB/EB)  
 Melrose Court  
 Middleton Lane (EB/SB)  
 Mill Street  
 Miller Drive (EB/WB)  
 Miller Drive (WB)  
 Miller Parkway (NB/SB)  
 Millstream Drive  
 Millstream Drive (SB)  
 Millstream Drive  
 Monroe Ave (NB)  
 Municipal Drive (WB)  
 Municipal Drive (EB)  
 Municipal Parking Lot (SB)  
 Murphy Dr (EB)  
 Murphy DR (SB)  
 Newport Trail (NB)  
 Northfox Lane  
 Norman Drive (NB)  
 Norman Drive (WB)  
 North Avenue  
 North Avenue  
 North Avenue  
 North Avenue  
 North Avenue  
 North Drive (NB/SB)  
 North Drive  
 North Drive  
 Northside Avenue (NB)  
 Oak Avenue (EB/WB)  
 Oak Avenue (EB/WB)  
 Oak Drive (NB/SB)  
 Oak Drive (NB/SB)  
 Oakton Court (SB)  
 Oakton Street (NB)  
 Oakwood Drive  
 Oakwood Drive (NB/SB)  
 Oakwood Drive (NB/SB)  
 Oakwood Drive  
 Ojibwa lane  
 Ojibwa Lane  
 Olde Mill Lane (SB)  
 Olde Mill Lane (NB)  
 Orchid Patch (NB)  
 Orchid Path (SB)  
 Oregon Trail  
 Oregon Trail  
 Orleans Street (WB)  
 Orleans Street (EB)  
 Orleans Street  
 Orleans Street (EB/WB)  
 Orleans Street  
 Orleans Street (EB/WB)  
 Orleans Street (NB/SB)  
 Overland Trail  
 Overland Trail  
 Parklane Avenue  
 Parklane Avenue  
 Park Place (WB)  
 Park Street (NB/SB)  
 Park Street (NB/SB)  
 Park Street (NB/SB)  
 Parkway Avenue  
 Parkway Avenue

**Intersecting Street**

Bull Valley Road  
 Miller Drive  
 Oakwood Drive  
 Prairie Street (MC-97-688)  
 Centegra Dr (MC-08-963)  
 Lawrence Parkway  
 Il State Route 31 (Front Street)  
 Ring Road (MC-02-815)  
 Wiltshire Drive  
 Longford Drive (MC-04-839)  
 Crystal Lake Road  
 Broadway  
 Hilltop  
 Prime Parkway (MC-94-632)  
 Elm Street  
 Front Street  
 Maple Avenue  
 Cunat DR (MC-08-963)  
 Knox Drive (MC-08-956)  
 Green Street (MC-91-564; MC-08-956)  
 Municipal Drive (MC-08-956)  
 Doolin Ave (MC-08-963)  
 Flynn St (MC-08-963)  
 Dartmoor Drive (MC-98-710)  
 Royal Drive  
 Dartmoor Drive (MC-02-808)  
 Joyce Lane (MC-02-808)  
 Home Avenue  
 Prairie Avenue  
 Shore Drive  
 Willow Lane  
 Grand Avenue  
 Maple Avenue  
 West Street  
 IL Route 120 (MC-96-644)  
 Center Street  
 Front Street  
 Orleans Street (MC-97-674)  
 Prairie Avenue (MC-87-411)  
 Dartmoor Drive (MC-98-710)  
 Dartmoor Drive (MC-00-755)  
 Bonner Drive  
 Chesterfield Drive  
 Meadow Lane  
 Royal Drive  
 Draper Road  
 Matanuska Trail  
 Leonard Street (MC-98-710)  
 McCullom Lake Road (MC-98-710)  
 Bull Valley Road  
 Miller Drive  
 Cross Trail (MC-00-752)  
 Glenbrook Trail (MC-00-752)  
 Donovan Street (MC-94-619)  
 Donovan Court (MC-95-619)  
 Industrial Drive  
 Leonard Avenue (MC-88-463)  
 McCullom Lake Road  
 Oak Drive (MC-97-674)  
 Prestwick Street (MC-94-619)  
 Cross Trail (MC-00-752)  
 Glenbrook Trail (MC-00-752)  
 IL State route 120 (Elm Street)  
 Shore Drive  
 Route 31 (MC-08-956)  
 Elm Street  
 Pearl Street  
 Washington Street  
 Eastern Avenue  
 Oak Drive

**Stop Street**

Pearl Avenue (NB)  
 Pearl Street (EB/WB)  
 Pearl Street  
 Pebble Creek Dr (WB)  
 Pebble Creek Drive (EB)  
 Perry Ln (NB)  
 Petersen Park Road (W intersection)  
 Petersen Park Road  
 Pin Oak Drive  
 Pine Drive (SB)  
 Pine Drive (NB-both intersections)  
 Pleasant Avenue  
 Pleasant Avenue  
 Plumrose Lane (NB)  
 Plumrose Lane (WB)  
 Polk Tr (EB)  
 Polk Tr (WB)  
 Ponca Street  
 Ponca Street  
 Prairie Avenue (EB/WB)  
 Prairie Avenue  
 Prairie St (EB)  
 Prairie Street  
 Prestwick Street  
 Prestwick Street  
 Prime Parkway (EB)  
 Pyndale Drive  
 Pyndale Drive  
 Radcliff Ct (WB)  
 Ramble Road  
 Ramble Road  
 Ramble Road (WB)  
 Reagan Blvd (SB)  
 Reagan Blvd (NB)  
 Redwood Lane (EB/WB/NB)  
 Redwood Lane (NB)  
 Redwood Lane (EB/WB/NB)  
 Redwood Lane (NB)  
 )Ridgeview Drive (NB/SB)  
 Ridgeview Drive (SB)  
 Ridgeway Trail (SB)  
 Ring Road (NB)  
 River Road (NB)  
 Riverside Drive (NB/SB)  
 Riverside Drive (NB/SB)  
 Riverside Drive (NB/SB)  
 Riverside Drive (NB/SB)  
 Riverside Drive Parking Lot  
 Riverstream Drive  
 Rogers Avenue  
 Rogers Avenue  
 Rogers Avenue  
 Rogers Avenue  
 Ronda Road (NB/SB)  
 Rose Ave (SB)  
 Rose Ave (NB)  
 Ross Ln (SB)  
 Royal Drive (NB)  
 Royal Drive  
 Ryan Street  
 Ryan Street  
 Sandburg Drive  
 Sandburg Drive  
 Sarasota Drive (EB)  
 Sarasota Drive (WB)  
 Sarasota Drive (WB)  
 Savoy Ln (EB)  
 Savoy Ln (NB)

**Intersecting Street**

Stillhill Drive  
 Green Street  
 Riverside Drive  
 Amberwood Pl (MC-08-963)  
 Green Street (MC-98-710)  
 Cunat Dr (MC-08-963)  
 Lakewood Road  
 McCullom Lake Road  
 Ojibwa Lane  
 McCullom Lake Road (MC-92-583;MC-98-706)  
 McCullom Lake Road (MC-02-795)  
 Home Avenue  
 Willow Lane  
 Arbor Drive (MC-06-881)  
 Hemlock Drive (MC-06-881)  
 Hillside Ln (MC-08-963)  
 Reagan Blvd (MC-08-9630)  
 Lillian Street  
 Logan Street  
 Meadow Lane  
 Oak Drive  
 Bally Rd (MC-08-963)  
 Beach Avenue  
 Donovan (MC-94-619)  
 Orleans Street  
 IL Route 31 (MC-90-541)  
 Bromley Court  
 Kensington Drive  
 Bennington Ln (MC-08-963)  
 Elm Street  
 Flower Street  
 North Avenue  
 Lincoln Rd (MC-08-963)  
 Tyler Tr (MC-08-963)  
 Chestnut Drive (MC-00-755)  
 Hazelwood Drive (MC-00-755)  
 Chestnut Drive (MC-00-755)  
 Hazelwood Drive (MC-00-755)  
 Bull Valley Road (MC-98-710;MC-01-774)  
 Prime Parkway (MC-94-632)  
 Deerwood Trail (MC-00-755)  
 Medical Center Drive (MC-02-815)  
 Lincoln Road (MC-96-644)  
 Broad Street  
 McCullom Lake Road (MC-97-670)  
 Washington Street (MC-97-676)  
 Pearl Street  
 Elm Street (MC-91-563)  
 John Street  
 Home Avenue  
 Prairie Avenue  
 Shore Drive  
 Willow Lane  
 Turnberry Drive (MC-97-677)  
 Tomlinson Dr (MC-08-963)  
 Whiting Dr (MC-08-963)  
 Cunat Dr (MC-08-963)  
 Chesterfield Drive  
 Crystal Lake Road  
 Orleans Street (MC-88-450)  
 Prestwick Street (MC-88-464)  
 Abbington Drive  
 Windridge Drive  
 Augusta Drive  
 Creekside Trail  
 Huntington Drive  
 Concord Dr (MC-08-963)  
 Veterans Parkway (MC-08-963)

**Stop Street**

Scully Drive  
 Settlers Court (NB)  
 Shannon Drive (WB)  
 Shepherd Hill Drive  
 Sherman Drive  
 Sherman Drive  
 Shore Drive (EB/WB)  
 Shore Drive  
 Shore Drive  
 Shore Drive (EB/WB)  
 Shore Drive (EB/WB)  
 Shore Drive (EB/WB)  
 Shorehill Drive  
 Shorehill Drive (EB/WB)  
 Shorehill Drive  
 Silbury Court (both intersections)  
 Silver Glen Road (NB)  
 Silver Glen Road (SB)  
 Sioux Lane  
 Skyway Drive (EB/WB)  
 Skyway Drive (EB)  
 Skyway Drive (EB/WB)  
 Somerset Mall  
 S. Sarasota Drive (EB)  
 South Street  
 South Street  
 Springbrook Ct (NB/SB)  
 Spring Creek Lane (WB/SB)  
 Springdale Lane  
 St. Paul Street (EB)  
 Steeplechase Court (SB)  
 Stonebridge Trail (EB)  
 Stratford Court (E intersection)  
 Stratford Court (W end)  
 Stillhill Drive (WB)  
 Stillhill Drive (EB)  
 Sumner Lane (WB)  
 Sunrise View (WB)  
 Sunrise View (EB/WB)  
 Sunset Avenue  
 Sunset Avenue  
 Sunset Avenue (both intersections)  
 Sussex Drive  
 Sussex Drive (EB)  
 Sycamore Court  
 Tamarack Court  
 Tanglewood Trail (EB)  
 Tanglewood Trail (NB)  
 Terrace (EB)  
 Terrace (WB)  
 Third Street  
 Third Street  
 Third Street (NB/SB)  
 Third Street (NB/SB)  
 Third Street (NB/SB)  
 Thornwood Drive  
 Thornwood Drive  
 Timber Trail Court (EB)  
 Timber Trail (EB)  
 Timber Trail (WB)  
 Timothy Lane  
 Timothy Lane  
 Tomlinson Dr (EB/WB)  
 Tomlinson DR (NB)  
 Tralee Lane (EB/SB)  
 Trappers Court (SB)  
 Truman Tr (NB)  
 Turnberry Drive (WB)  
 Turnberry Drive (EB)  
 Turnberry Drive (EB/WB)

**Intersecting Street**

Elm Street (Route 120)  
 Olde Mill Lane (MC-98-710)  
 Draper Road (MC-04-839)  
 Green Street  
 Ringwood Drive  
 Shore Drive  
 Meadow Lane  
 Oak Drive  
 Ringwood Road  
 Sherman  
 Beach Road  
 Parklane Avenue (MC-86-350)  
 Beach Avenue  
 Parklane Avenue  
 Sunset Avenue  
 Kensington Drive  
 Burning Tree Drive (MC-00-755)  
 Deerwood Trail (MC-00-755)  
 Lillian Street  
 Linda Road (MC-88-453)  
 Ronda Road (MC-97-668)  
 Valley Drive (MC-01-774)  
 Front Royal Drive  
 Huntington Drive  
 Lillian Street  
 Logan Street  
 Winding Creek Dr (MC-08-963)  
 Olde Mill Lane (MC-98-710)  
 Scully Drive  
 Green Street (MC-85-340)  
 Castlewood Trail (MC-01-787)  
 Whitmore Trail (MC-98-710)  
 Kensington Drive  
 Kensington Drive (MC-85-340)  
 Hilltop  
 Riverside Drive  
 Cunat Drive (MC-09-991)  
 Bonita Lane  
 Hilltop  
 Home Avenue  
 Shore Drive  
 Willow Lane  
 Ashley Drive  
 Front Royal Drive (MC-85-340)  
 Matanuska Trail  
 Ojibwa Lane  
 Whitmore Trail (MC-01-787)  
 Cobblestone Trail (MC-01-787)  
 Broadway  
 Hilltop  
 Elm Street  
 James Street  
 John Street  
 Main Street  
 Waukegan Road  
 Dartmoor Drive  
 Waters Edge Drive  
 Silver Glen Road (MC-00-755)  
 Ridgeway Trail (MC-00-755)  
 Silver Glen Road (MC-00-755)  
 Dale Avenue  
 Young Street  
 Bennington Ln (MC-08-963)  
 Whiting Dr (MC-08-963)  
 Cork Lane (MC-04-839)  
 Boone Creek Circle (MC-98-710)  
 Tyler Tr (MC-08-963)  
 Green Street (MC-90-524)  
 Ronda Road (MC-97-668)  
 Valley Road (MC-90-541)

**Stop Street**

Tustamena Trail  
 Tustamena Trail  
 Tyler Tr (SB)  
 Valley Drive (NB/SB)  
 Veterans Parkway (EB)  
 Veterans Parkway (WB)  
 Village Trail  
 Vine (WB)  
 Vine (EB)  
 Virginia Avenue  
 Vista Terrace (EB)  
 Vista Terrace (WB)  
 Wall Street (EB)  
 Wall Street (EB)  
 Walnut Lane (WB)  
 Washington Street (EB/WB)  
 Washington Street  
 Washington Street  
 Waterford Court (NB)  
 Waterford Drive (EB/SB)  
 Waters Edge Drive  
 Waters Edge Drive  
 Waukegan Road  
 Waukegan Road  
 Waukegan Road (EB/WB)  
 Wedgewood Tr (NB)  
 Wedgewood Trail (SB)  
 Wellington Drive  
 Wellington Drive  
 Westminster Pl (WB)  
 Westminster Pl (EB)  
 West Street  
 Wexford Court (NB)  
 Wexford Drive (NB)  
 Wexford Drive (EB/SB)  
 Whitaker Tr (SB)  
 Whiteoak Ct (WB)  
 Whiteoak Dr (NB)  
 Whitmore Trail (NB/SB)  
 Whitmore Trail (WB)  
 Willow Lane (EB/WB)  
 Wiltshire Drive (both intersections)  
 Windhaven Trail (WB)  
 Winding Creek Drive (EB/WB)  
 Winding Creek Drive  
 Winding Creek Drive (EB/WB)  
 Windridge Drive  
 Windridge Drive  
 Windsor Lane (WB)  
 Winslow Circle  
 Whiting Ct (NB)  
 Whiting Dr (SB)  
 Woodridge Trail (SB)  
 Woodridge Trail (EB)  
 Woodridge Trail (EB)  
 Wood Street  
 Wood Street  
 Woodmar Circle  
 Yorktown St (EB)  
 Yorktown St (SB)  
 Young Street

**Intersecting Street**

Chickaloon Drive  
 Matanuska Trail  
 Truman Tr (MC-08-963)  
 Skyway Drive (MC-01-774)  
 Barreville Rd (MC-08-963)  
 Route 31  
 Overland Trail (MC-00-752)  
 Barreville Road  
 Hollywood  
 Country Club Drive  
 Broadway  
 Hilltop  
 Hillside Lane (north intersection) (MC-06-897)  
 Hillside Lane (south intersection) (MC-06-897)  
 Pine Drive (MC-00-755)  
 Green Street (MC-97-699)  
 Richmond Road  
 Riverside Drive  
 Waterford Drive (MC-04-839)  
 Farmstead Drive (MC-04-839)  
 Dartmoor Drive  
 Kensington Drive  
 Front Street  
 Green Street  
 Third Street  
 Bluegrass Tr (MC-08-963)  
 Dartmoor Drive (MC-01-787)  
 Augusta Drive  
 Canterbury Drive  
 Amberwood Pl (MC-08-963)  
 Donnelly Pl (MC-08-963)  
 Front Street  
 Wexford Drive (MC\_04-839)  
 Ayre Drive (MC-04-839)  
 Farmstead Drive (MC-04-839)  
 Remington Tr (MC-08-963)  
 Whiteoak Dr (MC-08-963)  
 Tomlinson Dr (MC-08-963)  
 Dartmoor Drive (MC-98-710;MC-01-787)  
 Newport Trail (MC-98-710)  
 Meadow Lane  
 Oakwood Drive  
 Brookwood Trail (MC-87-420)  
 Crystal Lake Road (Mc-85-340;Mc89-505)  
 Driftwood Drive (Mc-90-526)  
 Heritage Drive (MC-86-365)  
 Dartmoor Drive  
 Greenbrier Drive  
 Cunat Drive (MC-09-991)  
 Waters Edge Drive  
 Whiting Dr (MC-08-963)  
 Tomlinson Dr (MC-08-963)  
 Deerwood Trail (MC-00-755)  
 Ridgeway Trail (MC-00-755)  
 Timber Trail (MC-00-755)  
 Crestwood Street  
 Crystal Lake Road  
 Waters Edge Drive  
 Baltimore St (MC-08-963)  
 Cunat Dr (MC-08-963)  
 Green Street

**13-502 YIELD STREETS ESTABLISHED.** It shall be unlawful for the operator of any vehicle being operated on any of the streets hereinafter listed in the column designated "Yield Streets" to drive such vehicle into the intersection with the street listed opposite to it in the column designated "Intersecting Streets", without first giving preferential right-of-way to traffic on said "Intersecting Street", and, if necessary, bring such vehicle to a full stop.

<u><b>YIELD STREET</b></u>	<u><b>INTERSECTING STREET</b></u>
Bonnie Brae (SB)	Pleasant View (MC-85-340)
Broadway (SB)	Pleasant View (MC-85-340)
Carol St. (SB)	Beach (MC-85-340)
Clearview Avenue	Central Street
Crescent Avenue	Golfview Avenue
Green Street (SB traffic making right-hand turn)	Waukegan Road
Hunter Drive	Park Lane
Hunter Drive	Sunset Avenue
Kinley Rd. (EB/WB)	McHenry (MC-85-340)
Lakewood Avenue	Shorehill Drive
Lincoln Avenue	Church Street
Lincoln Avenue	Freund Avenue
Parkway Avenue	Central Street
Pearl Avenue (SB)	Beach Drive (MC-85-340)
Spruce Lane	Flower Street
Victor Drive	Park Lane
Victor Drive	Sunset Avenue
First Avenue (WB)	Washington St. (MC-86-377)

**13-503 TRAFFIC CONTROL SIGNALS AUTHORIZED.** The traffic control signals erected at the following locations are hereby authorized and deemed to be official.

- (1) Riverside Drive at Elm Street
- (2) Green Street at Elm Street
- (3) Richmond Road at Elm Street
- (4) Front Street at Elm Street
- (5) Industrial Drive at Waukegan Road
- (6) Meadow Lane at IL State Route 120 (Elm St)
- (7) Lillian/Grove at IL State Route 31 (Front St)
- (8) Bull Valley Road at IL State Route 31 (Front St)
- (9) Ringwood Road/Draper Road at IL State Route 120 (Elm St)
- (10) Richmond Road at McCullom Lake Road (MC-88-449)
- (11) River Road at IL Route 120 (MC-96-644)
- (12) Chapel Hill Road at IL Route 120 (MC-96-644)

**13-504 PEDESTRIAN-CONTROL SIGNALS AUTHORIZED.** The pedestrian control signals erected at the following locations are hereby authorized and deemed to be official.

- (1) Riverside Drive at Elm Street
- (2) Green Street at Elm Street
- (3) Richmond Road at Elm Street
- (4) Front Street at Elm Street
- (5) Lillian/Grove at IL State Route 31 (Front St)

**13-505 NO RIGHT TURN ON RED LIGHT.** The driver of any vehicle facing a circular red traffic control signal is prohibited from making a right turn at the following intersections during the time such signal is exhibited: (MC-88-449)

- (1) Southbound traffic on Riverside Drive at Elm Street.

**13-506 NO RIGHT TURN ON RED LIGHT DURING NSCHOOL DAYS WHEN CHILDREN ARE PRESENT**  
The driver of any vehicle facing a circular red traffic control signal is prohibited from making a right turn at the following intersections during the time such signal is exhibited during school days when children are present:

- (1) westbound traffic on Pearl Street at Richmond Road (Route 31 North) (MC-05-875)

ARTICLE VI

**13-601 STOPPING, STANDING OR PARKING IN ALLEYS**

- A. No person shall stop, stand or park any vehicle in any alley for a period of time longer than is necessary for the reasonable expeditious loading or unloading of such vehicles.
- B. No person shall stop, stand or park a vehicle within an alley in such a manner or under such conditions as to leave available less than ten feet of the width of the roadway for the free movement of vehicular traffic.
- C. No person shall stop, stand or park a vehicle within an alley in such position as to block the driveway or entrance to any abutting property.

**13-602 PARKING LIMITED DURING SNOW REMOVAL**

It is unlawful to park any vehicle for a period of time longer than three minutes for loading or unloading of passengers or thirty minutes for loading or unloading of property in any place, whether designated as a loading zone or not so designated on the paved portion of any roadway, at anytime after snow begins to fall and for a period of eight hours after snow stops falling, if the snow on the street exceeds two inches in depth, provided that said eight-hour parking restriction shall continue during snow removal operations until completed.

**13-603 PARKING FOR CERTAIN PURPOSES PROHIBITED**

No person shall park a vehicle upon any roadway for the principal purpose of:

- a) Displaying such vehicle for sale.
- b) Washing, greasing, or repairing such vehicle except such repairs necessitated by an emergency.

**13-604 NO PARKING 2:00 A.M. TO 6:00 A.M.**

To make possible the cleaning of streets and removal of snow and ice, it shall be unlawful for the operator of any motor vehicle to park such motor vehicle between the hours of 2:00 o'clock a.m. to 6:00 o'clock a.m. in any of the following locations: (MC-91-563)

- a) The paved portion of any roadway;
- b) Riverside Drive Municipal Parking Lot;
- c) In any City-owned or controlled park including parking lots whether paved or unpaved. (MC-01-766)

**13-605 ANGLE PARKING ONLY**

Only angle parking shall be permitted in the following areas:

- a) Riverside Drive                      both sides from approximately 300 ft. south of Elm St to 200 ft. north of Pearl St. (MC-90-539)
- b) Main Street                              From the easterly edge of the Chicago & Northwestern RR property to 150 ft. east of Front St.
- c) Green Street                            from Elm St. south to the northerly edge of the Green ST. bridge over Boone Creek
- d) Park Street                              west side, from Pearl St. to Broad St. (MC-90-539)
- e) Court Street                             east side, from Pearl St. to Broad St. (MC-90-539)
- f) Broad Street                            south side, between Court St. & Park St. (MC-90-539)
- g) Pearl Street                              both sides, between Park St. & Riverside Dr. (MC-90-539)
- h) Pearl Street                              south side, from the back of the curbing on the east side of Green St. extended easterly 110 ft. (MC-90-529).
- i) Court Street                              west side, mid-block between Pearl St. & Elm St. beginning approx. 225 ft. south of the back of the curbing on the south side of Court St. & extending south a distance of 70 ft. (MC-90-539).

- |                                |   |
|--------------------------------|---|
| j) Riverside Drive Parking Lot | west side of the Riverside Drive Parking Lot.(MC-91-563)  |
| k) Center Street               | east side, from Main Street to John Street. (MC-92-573)   |
| l) John Street                 | north side between Center Street and Third Street; and north beginning at a point 33 feet east of the center line of State Rt 31 (Front St) and ending at a point 99 ft east of State Rt 31 (Front St) adjacent to 1002 Front St. (MC-01-765) |

Every vehicle that is angle-parked shall be so parked that the only manner of exiting said vehicle from the parking stall into the adjoining traffic lane is to back said vehicle out of said stall. (MC-90-515)

### 13-606 PERMIT PARKING ONLY

- A. It is unlawful to park any vehicle in any of the following described locations, which are hereby designated as "Permit Parking Only" spaces, unless such parking space has been leased pursuant to par. B of this Section and such vehicle displays a current parking permit on the right hand side of the rear window of such vehicle.
1. RIVERSIDE DRIVE PARKING LOT - All 38 regular parking stalls (shown on Table A-6 on page 78). These stalls shall not be posted or reserved solely for permit parking. Anyone holding a permit issued for permit parking will not be subject to four hour parking restriction (Section 13-617) at this location. All other parking restrictions will continue to be in effect (MC-01-770).
  2. COURT STREET MUNICIPAL PARKING LOT - the northernmost and the southernmost parking lot spaces (See Appendix A-3 on page 75 hereof).
  3. GREEN STREET MUNICIPAL PARKING LOT - the 23 parking spaces designated as "Zone D" in the Green Street Municipal Parking Lot (See Appendix A-1 on page 73 hereof).
  4. MAIN STREET NORTH MUNICIPAL PARKING LOT – thirteen parking spaces (See Appendix A-2 on page 74 hereof). MC-04-845
  5. MAIN STREET SOUTH MUNICIPAL PARKING LOT – five parking spaces (See Appendix A-2 on page 74 hereof). MC-04-845
- B. The aforesaid parking spaces may be leased for a term of not less than 3 months nor more than 12 months in duration, for a quarterly rental fee of \$15.00 each, payable in advance, and shall be made available on a first-come, first-served basis. The terms of the quarterly permit shall be for the following months: March through May, June through August, September through November, and December through February. No portion of the permit fee shall be refundable under any circumstances.
- C. In order to enable the City to snow plow the permit parking spaces, the parking of motor vehicles thereon shall be prohibited from the time that snowfall exceeds a depth of two (2) inches thereon on until the parking spaces have been snow plowed by the City.

### 13-607 TRAILER PARKING PROHIBITED

It shall be unlawful for any person to park any boat trailer, whether attached to a motor vehicle or not, on any part of Riverside Drive located south of Elm Street.

### 13-608 NO PARKING AT ANY TIME

It shall be unlawful for the operator of any motor vehicle to park such vehicle at any of the following locations at any time:

1. BORDEN ST on the east side from Main Street to Elm St.
2. COMMERCIAL AVE from Highview Avenue east to Meadow Lane.
- 2.1 CORPORATE DR entire length of street along both sides. (MC-96-656)
- 2.5 CROSS TRAIL on the east side from Joyce Lane to Crystal Trail (MC-03-826)
3. CRYSTAL LAKE RD on both sides of the street from Elm Street to the northern line of Hanley Street.
- 3.1 CRYSTAL LAKE RD along the west side of the street from Royal Drive to the south boundary of McH West Campus Hi School.
- 3.2 DARTMOOR DR on the south side of the street between Augusta Drive extending west to its intersection with Whitmore Trail (MC-02-807, MC-06-896)
- 3.3 DARTMOOR DR on the north side of the street from the east side of Boone Creek Bridge extending west to its intersection with Whitmore Trail (MC-06-896)
- 3.4 DARTMOOR DR on the north side of the street between the following locations: 20 feet east and 60 feet west of the crosswalk at Huntington Drive (MC-09-990)
4. ELM ST on the south side from Front Street to Court Street.(MC-90-547)
- 4.1 ELM ST on the north side in a northeasterly direction from the center line of Front Street for a distance of 150 ft.

4.2 ELM ST	on the north side from its intersection with the West Bank of Boone Creek to Court St (MC-90-547)
5. FREUND AVE	along the east side of the street from Elm Street to a point 300 feet north of Elm St
6. FRONT ROYAL DR	on the east side of the street from Manchester Mall to Elm St
7. FRONT ST	along the east side of the street from Elm St to a point 300 feet north of Elm St
7.1 FRONT ST	on both sides of the street for a distance of 50 feet south from Main St
7.2 FRONT ST	along the east side from the north driveway thereon of the First National Bank of McHenry to a point 80 feet north thereof
7.3 FRONT ST and PRIME PKWAY	for 400 feet on both sides of the intersection (MC-94-628)
8. GREEN ST	along the west side of the street between Washington St and Pearl St
8.1 GREEN ST	along the west side of the street from Waukegan Rd to a point 300 feet north of Waukegan Rd
8.2 GREEN ST	along both sides from Waukegan to Bull Valley Rd (MC-94-623)
8.3 RESERVED	(MC-94-623)
8.4 RESERVED	(MC-94-623)
8.5 RESERVED	(MC-94-623)
8.6 GREEN ST	on the west side of the street immediately north of the southerly driveway entrance to 1111 N Green St for a distance of 45 feet, except that this 45 foot space shall be reserved exclusively for parking Regional Transportation Authority buses (MC-92-571)
8.7 GREEN ST	on the east side of the street in front of the Green St entrance to 1110 N Green St beginning approximately 130 feet north of the north curbline extended for Waukegan Rd and ending 175 feet north thereof (MC-90-521).
9. HIGHVIEW AVE	both sides of the street from Elm to Home
10. INDUSTRIAL DR	the entire length of the street along both sides
11. JOHN ST	along both sides from Green St to the entrance driveway for McHenry Country Club; on the north side from the westerly point of the western-most edge of the Green Street right-of-way to a point 50 feet west (MC-94-623; MC-97-692).
12. KANE AVE	along the north side from Green St to Center St (MC-94-623)
12.1 KANE AVE	both sides of the street from its intersection with Front St to a point west, approximately 230 feet, at the easternmost edge of the driveway located at 4008 Kane Ave (MC-94-623; MC-01-782).
12.2 KRESSWOOD DR	along the exterior curb (MC-94-623; MC-04-844)
12.3 LAKEWOOD RD	at the southernmost portion in the turnaround area (MC-93-605)
13. LILLIAN ST	entire length of the street along both sides.
14. MAIN ST	along the south side from a point 250 feet east of Front St to Green St (MC-94-627)
15. MEADOW LN	both sides from Elm St to Shore Dr
15.2 MUNICIPAL DRIVE	entire length along both sides (MC-91-564; MC-08-956)
15.2 MILLER PKWY	entire length of street along both sides (MC-96-656)
15.3 OAK DRIVE	Between Route 120 and Prairie (MC-98-701)
15.4 ORLEANS DRIVE	Between the railroad tracks and Oak Drive (MC-98-701)
16. PEARL ST	along the north side of the street between Park St and Green St
16.1 PEARL ST	along the south side of the street between Richmond Rd and Court St except in the spaces provided
17. PETERSEN PK RD	along both sides of the road for the entire length of the road, except in the spaces provided
17.1 PRIME PKWY	entire length of street along both sides. (MC-96-656)
18. RAMBLE RD	both sides of the street from Elm to Home Ave
19. RICHMOND RD	on the east side of the road from Elm St to Pearl St.
19.1 RIDGEVIEW DR	entire length of street along both sides. (MC-96-656)
20. RIVERSIDE DR	along east side between the north City limits to a point on the southernmost edge of the Weber Park Lift Station driveway entrance. (MC-02-789)
20.1 RIVERSIDE DR	along the east side from Elm Street to a point 100 feet north of Elm Street
21.1 ROYAL DR	on the north side of the street from a point 465 feet northwesterly of the intersection of Oakwood Drive and Royal Drive, east to the intersection of Royal Drive and Crystal Lake Road (MC-02-816)
21.2 ROYAL DR	on the south side of the street from a point 604 feet northwesterly of the intersection of Oakwood Drive and Royal Drive, east to the intersection of Royal Drive and Crystal Lake Road (MC-02-816)
22. SHAMROCK LN	the entire length along both sides. (MC-89-481)
22.1 SUNSET DR	on the east side from the creek bridge to the corner of Willow Ln
23. THIRD ST	on both sides from Waukegan Road to Elm St.
24. WAUKEGAN RD	on the south side from Green Street to the Fox River.
24.1 WAUKEGAN RD	along south side from Green St to Third St. (MC-94-623)

- 24.2 RESERVED (MC98-702)  
 24.3 RESERVED (MC92-576)  
 24.4 WAUKEGAN RD on north side from Green St. to Fourth St.  
 24.5 WAUKEGAN RD on the north side of the road from a point 610' east of Green Street to the Fox River (MC98-702).  
 25.1 WILTSHIRE DR on the north and/or east side from the easternmost point of 912 Wiltshire Drive east/south 879 feet to the easternmost intersection of Wiltshire Drive and Oakwood Drive (MC-03-820)  
 25.2 WILTSHIRE DR on the south and/or west side from the easternmost point of 913 Wiltshire Drive east/south 740 feet to the easternmost intersection of Wiltshire Drive and Oakwood Drive (MC-03-820)

**13-608(a) NO PARKING AT ANY TIME IN FRONT OF ANY MCHENRY UTILITY FACILITY (MC-09-982)**

It shall be unlawful for the operator of any motor vehicle or any other vehicle to park or block the driveway of any of the following locations at any time:

1. 1016 Broadway, Sanitary Lift Station
2. 1105 Carrick Lane, Sanitary Lift Station
3. 501 Cartwright Trail, Sanitary Lift Station
4. 5400 Dartmoor Drive, Sanitary Lift Station
5. 6400 Dartmoor Drive, Sanitary Lift Station
6. 3621 Diamond Drive, Sanitary Lift Station
7. 1809 Donovan Street, Sanitary Lift Station
8. 1914 Doolin Lane, Sanitary Lift Station
9. Between 5825 and 5827 Fieldstone Trail, Sanitary Lift Station
10. 3611 Freund Avenue, Sanitary Lift Station
11. 3800 Grove Avenue, Sanitary Lift Station
12. 1934 Hemlock Lane, Sanitary Lift Station
13. 3710 Millstream Drive, Sanitary Lift Station
14. 1401 N Riverside Drive, Sanitary Lift Station
15. 701 S Riverside Drive, Sanitary Lift Station
16. 1115 River Road, Sanitary Lift Station
17. 1201 S River Road, Sanitary Lift Station
18. 2515 W Route 120, Sanitary Lift Station
19. 4506 Willow Lane, Sanitary Lift Station
20. 3306 Waukegan Road, Central Wastewater Treatment Plant
21. 222 S. McHenry Avenue, South Wastewater Treatment Plant.

**13-609 NO PARKING 6:00 A.M. to 6:00 P.M.**

It shall be unlawful for the operator of any motor vehicle to park such vehicle between the hours of 6:00 A.M. to 6:00 P.M. in any of the following locations:

1. Riverside Dr adjacent to 1312 N. Riverside Drive.

**13-609(a) NO PARKING 7:00 A.M. TO 7:00 P.M. ON WEEKDAYS (MC-02-794)**

It shall be unlawful for any operator of a motor vehicle to park such vehicle between the hours of 7:00 a.m. and 7:00 p.m. on Weekdays In any of the following locations:

1. Oakwood Dr on both sides of the road between its intersection with Royal Drive and its westernmost intersection with Wiltshire Drive

**13-610 NO PARKING 8:00 A.M. TO 4:00 P.M. ON SCHOOL DAYS**

It shall be unlawful for the operator of any motor vehicle to park such vehicle between the hours of 8:00 a.m. to 4:00 p.m. on School Days in any of the following locations:

1. John Street on the south side from Green Street west to Fourth Street. (MC- 97-692)
2. John Street on the north side of the road between Green St and Fourth St (MC98-702)
3. Allen Avenue both sides of the road between Green St. and John St.(MC99-718)
4. Fourth St on both side of the street between Main St and James St (MC-99-740)
5. Reserved (MC-07-944)
6. Kane Avenue on the north side from Green Street to a point 320 feet west of its intersection with Green Street (MC-02-794; MC-05-873)

**13-610(A) NO PARKING ON FRIDAYS BETWEEN THE HOURS OF 4:00 P.M. AND 12:00 AM.**

It shall be unlawful for the operator of any motor vehicle to park such vehicle between the hours of 4:00 p.m. and 12:00 a.m. on Fridays in any of the following locations:

1. Kane Ave along the north side from a point 320 feet west of Green St to a point 230 feet east of Center St (MC-02-798)

**13-610(B) NO PARKING OR STANDING BETWEEN THE HOURS OF 8:00 A.M. TO 4:00 P.M. ON SCHOOL DAYS (MC-07-944)**

It shall be unlawful for the operator of any motor vehicle to park or sit in a vehicle standing between the hours of 8:00 a.m. and 4:00 p.m. on school days at any of the following locations:

1. Driftwood Trail on the west side of the street between Winding Creek Drive and Glenbrook Trail.

**13-611 NO PARKING 10:00 P.M. TO 4:00 A.M. (MC-92-580; MC-94-623)**

It shall be unlawful for the operator of any motor vehicle to park such vehicle between the hours of 10:00 P.M. and 4:00 A.M. in any of the following locations:

1. Court St. on the east side, adjacent to Veteran's Memorial Park, from Pearl St. to Broad St.
2. Broad St. on the south side, adjacent to Veteran's Memorial Park, from Court St. to Park St.

**13-612(A) - PARKING FOR PERSONS WITH DISABILITIES (MC-91-550)**

It shall be unlawful for any person, other than a medically handicapped person, to park any motor vehicle in any of the following locations, which shall be marked by the appropriate signs:

- |                            |  |
|----------------------------|--|
| Center St                  | the five (5) northern most parking spaces on the east side of Center Street adjoining the First United Methodist Church, except that the southern most three parking spaces shall only be handicapped parking spaces from 8:00 A.M. to 12:00 Noon on Sundays Only. (MC-92-573) |
| Metra Commuter Parking Lot | first five (5) parking spaces in the north-west corner adjacent to Main St, west of railroad tracks. (MC-96-653)   |
| Elm St                     | the westerly most parking space on the north side of Elm Street east of Front Street.  |
| Green St                   | one parking space abutting on the north and on the south of the no parking zone on the east side in front of 1110 N. Green St. (MC-90-521)   |
| Green St                   | the northern most parking space in front of 1111 N. Green Street.  |
| Green St                   | the northern most parking space on the east side south of Pearl St.  |
| Green St                   | the parking space abutting the fire hydrant no parking area in front of 1228 N. Green St   |
| Kane Ave                   | five (5) parking spaces on the north side, 950 feet west of the Kane Avenue and Green Street Intersections. (MC-94-607; MC-95-636)   |
| Main St                    | near the alley to the west of the building, in front of 3926 W. Main. (MC-94-607)  |
| Main St                    | the 7th parking space west of Front St on the south side.  |
| Main St                    | the parking space adjoining the street light pole at the east corner of the Depot Hotel at 3941 W. Main St.  |
| Riverside Dr               | the northern most parking space on the west side south of Pearl St.  |
| Riverside Dr               | the parking space on the east side In front of entrance to 1314 N. Riverside Dr.   |
| Riverside Dr               | the parking space in front of 1334 N. Riverside Dr.  |
| Riverside Dr Parking Lot   | the two (2) parking spaces designated with an "H" in the Riverside Drive Parking Lot (See Appendix A-6 on pg 138 (MC-91-563)   |
| Riverside Dr               | the northern-most parking space on the east side of the street south of Elm (MC-97-700)  |

Court St Parking Lot

the one (1) parking space designated with an "H" in the Court St Parking Lot (See Appendix A-3 on page 135 hereof).

Green St Parking Lot

(a) the three (3) parking spaces designated with an "H" in Zone B of the Green St Parking Lot;  
 (b) the one (1) parking space designated with an "H" in Zone C of the Green St Parking Lot;  
 (See Appendix A-1 on pg 133)

Knox Pk East Parking Lot

the two (2) parking spaces designated with an "H" in the pool area (See Appendix A-4 pg 136)

Petersen Pk Parking Lot

the 3 parking spaces designated with an "H" in the Petersen Park Parking Lots (See Appendix 5 on page 137 hereof).

Veterans Memorial Pk Parking Areas

the four (4) parking spaces designated with an "H" in the Veterans Memorial Park Parking Areas (See Appendix A-2 on page 134 hereof).

**13-612(B). PARKING FOR PERSONS WITH DISABILITIES**

Parking spaces set aside for medically handicapped persons may be occupied by motor vehicles displaying a State of Illinois medically handicapped registration plate, or an Illinois Disabled Person Identification Card issued by the City of McHenry or other municipality pursuant to the Illinois Identification Card Act. Such identification card may be obtained from the City Clerk upon request supported by written certification from a medical doctor addressed to the City of McHenry that the applicant for the card is a medically handicapped person. The fee charged for the issuance of such identification card shall be as follows:

TEMPORARY DISABILITY IDENTIFICATION CARD:	
First time issuance fee for a 90 day card .....	\$5.00
Reissue or replacement fee of a 90 day card .....	\$2.00

The medically handicapped parking card shall be prominently displayed by attaching it to the vehicle's rearview mirror or placing it on the dashboard or visor when no rearview mirror is available. (MC-94-612)

**13-612(C). PARKING FOR PERSONS WITH DISABILITIES**

Vehicles bearing the aforementioned medically handicapped parking cards or registration plates, when parked in other areas of the City are exempt from any ordinance imposing time limitations on parking, but are subject to the provisions of all other parking ordinances.

**13-613 TWO (2) HOUR PARKING BETWEEN 8:00 A.M. and 6:00 P.M. EXCEPT SUNDAY**

It shall be unlawful for the operator of any motor vehicle to park such vehicle for more than two consecutive hours between the hours of 8:00 A.M. to 6:00 P.M. except Sunday in the following locations:

- 1. COURT ST along the entire west side of the street and on the north 208 feet of the east side of the street from Venice Ave to Elm St. (MC-89-494)
  - 1.1 Reserved (MC-04-856)
- 2. FRONT ST along the west side of the street from Elm Street to John Street (MC-92-588)
- 3. GREEN ST Reserved (MC-04-856)
  - 3.1 GREEN ST along the east side of the street between Pearl Street and Broad Street.
  - 3.2 RESERVED
- 4. KANE AVE along the south side of the street from Green Street to Center Street.
- S. PARK ST along both sides of the street from Venice Avenue to Elm Street and from Elm Street to Pearl Street.
- 6. PEARL ST on the north side of the street between Richmond Road and Green Street.
- 6.1 PEARL ST along the south side of the street from Court Street to Park Street.

**13-614 TWO (2) HOUR PARKING 8:00 A.M. TO 4:00 P.M. ON SCHOOL DAYS.**

It shall be unlawful for the operator of any motor vehicle to park such vehicle for more than two (2) consecutive hours on school days between the hours of 8:00 A.M. and 4:00 P.M. in any of the following locations: (MC-94-623)

- 1. Allen Avenue along its entire length on both sides of the street.
- 2. John Street along the north side of the street from a point 200 feet east of Front Street to a point 50 feet west of Green Street and along the south side of the street from a point 200 feet east of Front Street to Fourth Street. (MC-97-692)

3. Center Street along both sides from James Street to Main Street except for the handicapped parking spaces set forth in Section 13-1225.
4. Fourth Street along both sides from James Street to Main Street.
5. James Street along both sides from Green Street to Center Street.
6. Main Street along the north side from green Street to a point 265 feet east of Front Street
7. Third Street along both sides from James St to Main St. (MC-94-627)
- 7.1 Third Street along the west side from Main St to Waukegan Rd. (MC-94-627)
- 7.2 Third Street along the east side from Main St to a point 135 feet north of Main St. (MC-94-627)
8. Waukegan Rd along the north side from Fourth Street to Third Street.
- 8a. Waukegan Rd along the north side from the intersection with Green Street east to a point 610' east of Green St MC-05-871

### **13-615 TWO (2) HOUR PARKING**

It shall be unlawful for the operator of any motor vehicle to park such vehicle for more than two consecutive hours In the following locations:

1. ELM ST on both sides, from Riverside Drive to Court Street (MC-92-569; MC-92-576)
2. ELM ST on the north side, beginning 150 feet northeast of the centerline of Front Street, to its Intersection with the West Bank of Boone Creek. (MC-90-547)
3. GREEN ST both sides from Pearl Street to Waukegan Road, except those locations posted otherwise. (MC-91-559; MC-91-567)
4. MAIN ST from the easterly edge of the Chicago and Northwestern property to a point 150 feet east of Front St on both sides of Main St.
5. PEARL ST from Green St to a point 150 feet east of Green St on the south side only.(MC-97-689)
6. RIVERSIDE DR from Elm St to a point 200 feet north of Pearl St on both sides of Riverside Drive
7. RESERVED (MC98-702)
8. WAUKEGAN RD from a point on the north side thereof 100 feet east of its intersection with Front St, thence easterly to Third St.
9. WAUKEGAN RD on the south side thereof from a point 175 feet east of its intersection with Front St, thence easterly to Third St.

### **13-616 FOUR (4) HOUR PARKING 6:00 A.M. to 6:00 P.M. EXCEPT SATURDAY, SUNDAY AND HOLIDAYS.**

It shall be unlawful for the operator of any motor vehicle to park such vehicle for a period of time longer than 4 (four) consecutive hours from 6:00 A.M. to 6:00 P.M. except Saturdays, Sundays and Holidays, at any of the following locations:

1. PARK ST west side between Pearl St and Broad St.
2. BROAD ST south side between Park St and Court St.
3. COURT ST east side between Broad St and Pearl St.

### **13-617 FOUR (4) HOUR PARKING.**

It shall be unlawful for the operator of any motor vehicle to park such vehicle for a period of time longer than four (4) hours at the following described locations:

1. Zone A Green St Municipal Parking Lot (see Appendix A-1, page 133 hereof)
2. Zone B Green St Municipal Parking Lot except the three (3) parking spaces designated "H" handicapped parking (See Appendix A-1, page 133 hereof) (MC-91-550)
3. COURT STREET MUNICIPAL PARKING LOT (MC-89-488)  
(except for the permit parking areas, See Section 13-1220; and the designated "H" handicapped parking spaces, See Appendix A-3 on page 135 hereof (MC-91-550)
4. RIVERSIDE DRIVE PARKING LOT (MC-91-563)  
(except two (2) designated "H" handicapped parking spaces, See Appendix A-6.)
5. PEARL STREET from Park Street to the Fox River on both sides. (MC-97-689)

### **13-618 FOUR (4) HOUR PARKING 8:00 A.M. TO 6:00 P.M. EXCEPT SUNDAY**

It shall be unlawful for the operator of any motor vehicle to park such vehicle for a period of time longer than four (4) consecutive hours between the hours of 8:00 A.M. and 6:00 P.M. except Sunday at any of the following locations:

1. MAIN ST North Municipal Parking Lot.(Mc-97-687)
2. MAIN ST South Municipal Parking Lot.(MC-97-687)
3. COURT ST from Elm Street to Pearl Street (MC-04-856)
4. GREEN ST along both the east and west sides of the street between Elm Street and Pearl Street (MC-04-856; MC-05-874)

**13-619 LOADING ZONES.**

It shall be unlawful for the operator of a motor vehicle to permit the standing or parking of a motor vehicle in the following designated loading zone areas unless such motor vehicle is a delivery vehicle which is servicing an adjoining business:

- (a) The east side of the Riverside Dr Municipal Parking Lot (Appendix A-6) between Pearl St and a point which is 14 feet south of 1309 Riverside Dr (except the area located at the rear of 1315 Riverside Dr). (MC-91-563)
- (b) The east side of Main Street in front of 3931 Main Street. (MC-08-959)

**13-620- SCHOOL BUS LOADING ZONES.**

It shall be unlawful for the operator of any motor vehicle to park such vehicle between the hours of 2:00 p.m. and 3:00 p.m. on school days at the following location:

- 1. Kane Avenue On the south side, beginning at a point approximately 496 feet east of the center line of Center Street to a point 234 feet extended easterly from the point of beginning.

**13-621 15-MINUTE PARKING 8 A.M. UNTIL 5 P.M. ON MONDAY THROUGH FRIDAY (MC-08-965)**

- (a) Four parking stalls in front of the Main Entrance to the McHenry Municipal Center

**13-622 15-MINUTE PARKING 8 A.M. UNTIL 6 P.M. ON MONDAY THROUGH SATURDAY (MC-08-964)**

It shall be unlawful for the operator of any motor vehicle to park such vehicle for longer than fifteen consecutive minutes between the hours of 8 a.m. and 6 p.m. on Monday through Saturday at the following locations:

- (a) Three parking stalls at 1307-1309 North Riverside Drive
- (b) Two parking stalls at 1325 North Riverside Drive
- (c) Two parking stalls at 1214 North Green Street
- (d) Two parking stalls at 1245-1249 North Green Street
- (e) Two parking stalls at 3923 Main Street

**ARTICLE VII**

**DESIGNATED PUBLIC DRIVEWAYS (MC97-670)**

- 13-701** For purposes of Chapter 13, Article VII only, the phrase, "Local or Secondary Residential Streets", shall not be deemed to include Industrial Drive, Oak Drive or McCullom Lake Road wherein this Article VII regulates Motor Vehicle traffic on Orleans Street.
- 13-702** Pursuant to 65 ILCS 5/11-97-1, et seq., Orleans Street and Riverside Drive north of Pearl Street are hereby designated as Public Driveways to be used for pleasure driving only.
- 13-703** Motor Vehicle traffic on Orleans Drive and Riverside Drive, as designated in Section 13-702, above, shall be regulated as follows:
- (a) Orleans Street.
    - 1. Motor Vehicle traffic on Orleans Street shall be limited to (i) First Division Vehicles, (ii) Second Division Vehicles registered with the Secretary of State as Class B license plates and (iii) Second Division Vehicles with residential destinations along Orleans Street and Local or Secondary Residential Streets intersecting Orleans Street, e.g., refuse and recycling vehicles on the designated pick-up days, school buses on their scheduled routes, and trucks that are providing deliveries and service; (MC-97-675)
    - 2. The intersections of Orleans Street and Donovan Street, Leonard Avenue and Prestwick Street, are hereby designated crosswalks and shall be marked and signed accordingly.
  - (b) Riverside Drive.
    - 1. Motor Vehicle traffic on Riverside Drive shall be limited to (i) First Division Vehicles, (ii) Second Division Vehicles registered with the Secretary of State as Class B license plates, and (iii) Second Division Vehicles with residential destinations along Riverside Drive, e.g., refuse and recycling vehicles on the designated pick-up days, school buses on their scheduled routes, and trucks that are providing deliveries and service.(MC-97-675)
- 13-704** Any person, firm, association, co-partnership or corporation violating any provision of this Article XVI shall be fined not less than \$50 nor more than \$750 for each offense.

**ARTICLE VIII  
WEIGHTS AND LOADS**

- 13-801** **WHEEL AND AXLE LOADS AND GROSS WEIGHTS.**  
The provisions of 625 ILCS 5/15-111(f) shall only apply to the following designated roadways:
- (a) Elm Street, the entire length within the City.
  - (b) Front Street, from Elm Street to the south limits of the City.
  - (c) Richmond road, from Elm Street to the north limits of the City.
- 13-802** **TRUCK ROUTES ESTABLISHED.**
- (a) The following streets or highways are hereby designated as through truck routes:
    - 1. Illinois State Route 120 - through its entire traverse of the City;
    - 2. Illinois State Route 31 - through its entire traverse of the City;
    - 3. Crystal Lake Road - between Illinois State Route 120 and the south City limits;
    - 4. Ringwood Road - between Illinois State Route 120 and the north City limits;
    - 5. Draper Road - between Illinois State Route 120 and the south City limits;

(b) The following streets or highways are hereby designated as local truck routes:

1. Green Street - between Pearl Street and the south City limits;
2. John Street - between Front Street and Virginia Ave.;
3. Pearl Street - between the Fox River and Richmond Rd.;
4. Riverside Drive - between Elm Street and Pearl St.;
5. Waukegan Road - between Green Street and the Fox River;
6. Main Street - between Front Street and Crystal Lake Road;
7. Borden Street - between Main Street and West Street;
8. West Street - between Borden Street and North Dr.;
9. North Drive - between West Street and Boone Creek;
10. Lillian Street - between Front Street and Crystal Lake Road;
11. Front Royal Drive - between IL State Route 120 and Chesterfield Drive;
12. Royal Drive - between Chesterfield Drive and Crystal Lake Road;
13. Oakwood Drive - between Crystal Lake Road and Bonner Dr.;
14. Kensington Drive - between Crystal Lake Road and Oakwood Drive;
15. Waters Edge Drive - between Kensington Drive and Dartmoor Drive;
16. Dartmoor Drive - between Waters Edge Drive and Augusta Drive;
17. Greenbrier Drive - between Crystal Lake Road and Augusta Drive;
18. Augusta Drive - between Greenbrier Drive and Dartmoor Drive;
19. Meadow Lane - between Oakwood Drive and Shore Drive;
20. Beach Avenue - between IL State Route 120 and Shore Drive;
21. Industrial Drive - its entire length;
22. Home Avenue - between the rear of the Market Place and Beach Avenue.
23. Ramble Road - between IL State Route 120 and Home Avenue;
24. Shore Drive - between Ringwood Road and Oak Drive;
25. Oak Drive - between Shore Drive and Prairie Avenue;
26. Prairie Avenue - between Oak Drive and Meadow Lane.

**13-803**

**No Trucks or Buses Routes.** No person shall operate or cause to be operated, any truck or bus (except school buses and

Dial-a-Ride buses) upon any of the following streets within the City of McHenry which shall be posted "No Trucks or Buses" routes:

1. West Street - between North Drive and Front Street. (MC-85-328)

**13-804**

**Prohibited Motor Vehicle Operation** on Riverside Drive Between Elm Street and Pearl Street. No trucks (except pick-up trucks which are issued Class B license plates by the State of Illinois) nor any vehicle or combination of vehicles equipped with pneumatic tires, unladen or with load, when the gross weight on the road surface through any single axle thereof exceeds 8,000 pounds, shall be operated upon Riverside Drive between Elm Street and Pearl Street. (MC-86-354)

**13-805**

**Prohibited Motor Vehicle Operation** on Martin Road Between Illinois route 120 and Ringwood Road. No truck nor any vehicle or combination of vehicles equipped with pneumatic tires, unladen or with load, when the gross weight on the road surface exceeds 8,000 pounds, shall be operated on Martin Road between Route 120 and Ringwood Road between the dates of April 15<sup>th</sup> and June 13<sup>th</sup> inclusive. The provisions of this section do not apply to refuse and recycling vehicles on the designated pickup day, school buses on their scheduled routes, and trucks that are providing deliveries and service. (MC-99-723)

**ARTICLE IX  
MISCELLANEOUS**

**13-901. SKATEBOARDS (MC99-727) \***

- (A) No person shall ride a skateboard upon any sidewalk or highway located within any commercial zoning district within the City.
- (B) The Director of Public Works is authorized to have signs erected in such commercial zoning district prohibiting the riding of skateboards therein.
- (C) No person shall ride or operate a skateboard within any City park or bike path, except at such places as may be designated by the Director of Parks and Recreation and then only in accordance with the rules, regulations and restrictions promulgated and posted.

**13-902. SNOWMOBILES PROHIBITED IN CITY OF MCHENRY PARK PROPERTY.**

It shall be unlawful for any person to operate any snowmobile in any City park, on any nature trail in the City, or on any City-owned property. (MC-00-758)

**13-903 MOTORIZED SKATEBOARDS AND SCOOTERS (MC-04-852**

A. Definitions: The following words, when used in this section, shall have the following meanings:

1. Motorized Skateboard, any device that has a deck or platform on which a person may stand or sit, with two or more wheels, and that is self-propelled by any type of motor or engine; provided, however, that the term "motorized skateboard" shall not include the following:

- i. a motor vehicle (as defined in 625ILCS 5/1-146)
- ii. a motorcycle ( as defined in 625ILCS 5/1-147)
- iii. a motor driven cycle (as defined in 625ILCS 5/1-145.001)
- iv. a motorized pedacycle (as defined in 625ILCS 5/1-148.2, or
- v. a motorized wheelchair (as defined in 625ILCS 5/1-148.3 or other device designed and used to transport a person with a disability.

2. Motorized Scooter, shall include all wheeled vehicles not licensed for use on public roads, and which are powered by gas or electric motors. By way of illustration and not limitation, scooters include all-terrain vehicles, go-carts, minibikes, motorized skateboards, off-road motorcycles and motorized bicycles.

B. Limitation on Use: With the exception of authorized employees and officers of the City of McHenry, United States Postal Service employees, and other authorized governmental employees, no person shall operate or ride a motorized skateboard or motorized scooter on or within any of the following places in the City:

- i. Private streets and rights-of-way
- ii. Public streets and rights-of-way
- iii. Public sidewalks
- iv. Public parking lots or areas
- v. Public parks; and
- vi. Any other public property.

C. Fine; Impoundment and Redemption: Any person violating this Section shall be subject to a citation and imposition of a fine pursuant to the general penalty provisions set forth in Article X of this Code. Additionally, any person who has been issued three or more citations for violations of this Section within any 12-month period shall be required to surrender, at the time of issuance of a citation, the motorized skateboard or motorized scooter to the police officer or other authorized official who issues the citation. The surrendered motorized skateboard or motorized scooter shall be impounded and held by the City of McHenry Police Department and shall be returned to its owner only after one of the following sets of conditions has been met:

- i. The person against whom the citation was issued shall have paid or caused to be paid:
  - a) all outstanding fines; and b) the fees and costs of the City in the amount of \$100; or
- ii. The person against whom the citation was issued shall have : a) paid or caused to be paid all outstanding fines, and b) presented to the City proof that a determination of not-guilty was made for the cited offense.

D. Payments to Avoid Prosecution: A person charged with a violation of this Section may avoid prosecution by paying to the City the following amounts for each violation within the time specified:

<u>Time Period</u>		<u>Amount of Fine</u>
0 to 10 days		\$10.00
11 to 20 days	\$20.00	
21 to 30 days	\$50.00	

After 30 days, the fine must be paid in full or a court appearance will be required. This sub-section 13-903 D shall not affect the redemption fee of \$100 set forth in Paragraph 13-903 C-i.

**13-904. COMPRESSION/RELEASE ENGINE BRAKE USE (MC-04-857)**

No person shall operate or cause to be used or operated within the city any compression/release engine brake on any vehicle for any reason. For purposes of this Section 13-904, compression/release engine brake is defined as any mechanical exhaust device designed to aid in the braking or deceleration of any vehicle by converting engine power to compressed air which results in excessive, loud, unusual or explosive noise from such vehicle, otherwise known as “Jake-Braking”.

- Cross Reference – Skateboards, Municipal Code Sec. 16-49.

**ARTICLE X.  
PENALTIES**

**13-1001 PENALTY.**

All Penalty provisions contained or referred to or incorporated in subsection 13-001 are also adopted and incorporated, including but not limited to those contained in the Unified Code of Corrections (730 ILCS 5/1-1-1 et seq.), as Subsection 13-001 of the Municipal Code, City of McHenry, Illinois, with the exception of the fine penalties listed for persons found guilty of violating Subsection 13-001, pars. 6-303, 11-501(a)(1); 11-501(a)(2); 11-501(a)(3); and 11-501(a)(4).

**13-1002 DRIVING WHILE DRIVER'S LICENSE, PERMIT, OR PRIVILEGE TO OPERATE A MOTOR VEHICLE IS SUSPENDED OR REVOKED.**

Any person found guilty of violating Subsection 13-001, par. 6-303 shall be fined not less than \$250.00 nor more than \$2,500.00.

**13-1003 DRIVING WHILE UNDER THE INFLUENCE OF ALCOHOL, OTHER DRUG, OR COMBINATION OF BOTH.**

Any person found guilty of violating Subsection 13-001, pars. 11-501(a)(1); 11-501(a)(2); 11-501(a)(3); and 11-501(a)(4) shall be fined not less than \$750.00 nor more than \$2,500.00.

**13-1004 PARKING PENALTY. (MC-10-1002)**

The penalty for all parking offenses with the exception of violation of a fire lane (625 ILCS 5/11-209(h), fire hydrant (625 ILCS 5/11-1303(a)(2b), and unauthorized use of parking places reserved for persons with disabilities (625 ILCS 5/11-1301.3) shall be not less than \$250.00 and not more than \$500.00. The penalty for violation of a fire lane and violation of a fire hydrant shall be not less than \$100.00 nor more than \$500.00

**13-1005 UNAUTHORIZED USE OF PARKING PLACES RESERVED FOR PERSONS WITH DISABILITIES. (MC-07-935)**

The penalty for the unauthorized use of parking places reserved for persons with disabilities shall be \$250.00 in addition to any costs or charges connected with the removal or storage of any motor vehicle authorized under 625 ILCS 5/11-1301.3.

**13-1006 GENERAL PENALTY.**

Unless otherwise provided, any person, firm or corporation violating any section of this Chapter 13 shall be fined not less than \$75.00, nor more than \$750.00 for each offense. Each day on which a violation occurs or continues shall be deemed to be a separate offense.

**13-1007 COST OF PROSECUTION.**

All fines shall include the City's cost of prosecution, including but not limited to filing fees, witness fees and attorneys fees.

**13-1008 VOLUNTARY SETTLEMENTS REGARDING CERTAIN ORDINANCE VIOLATIONS.(MC-07-935;MC-10-1002)**

Any of the following described offenses arising under Chapter 13 of the Municipal Code, City of McHenry, Illinois, and as amended, may be settled and compromised by the offender within the time herein specified after a Notice of Violation therefore is delivered to the offender, by payment to the City the sum of money hereinafter set forth opposite such offense:

Table A

SECTION	OFFENSE	SETTLEMENT PENALTY FOR FIRST OCCURENCE IF PAID:	
		WITHIN 30 DAYS OF VIOLATION	AFTER 30 DAYS FOLLOWING VIOLATION
13-108	Vehicle Sticker	\$25.00	\$50.00
13-608; 13-608(a)	No Parking Anytime	\$25.00	\$50.00
13-609; 13-609(a)	Overtime Parking	\$25.00	\$50.00
13-610; 13-610(a); 13-610(b)	Overtime Parking	\$25.00	\$50.00
13-611	Overtime Parking	\$25.00	\$50.00
13-613; 13-614; 13-615; 13-616; 13-517; 13-618	Overtime Parking	\$25.00	\$50.00
13-619	Loading Zone	\$25.00	\$50.00
13-620	School Bus Loading Zone	\$25.00	\$50.00
13-621	15 Minute Parking Zone	\$25.00	\$50.00
5/11-209(H)	Parking, Fire Lane	\$100.00	\$200.00
5/11-1301.3	Parking, Disabilities	\$250.00	\$500.00
5/11-1303(A) and (B)	Parking, Fire Hydrant	\$100.00	\$200.00
Any other parking violation not listed above		\$25.00	\$50.00

**ARTICLE XI. Validity**

Should any section or provision of this Ordinance be declared by a court of competent jurisdiction to be invalid, such decision shall not affect the validity of the ordinance as a whole or any part thereof, other than the part so declared to be invalid.

**ARTICLE XII. Prior Ordinances Repealed**

All ordinances or parts of ordinances, heretofore passed and approved by the City Council of the City of McHenry which are in conflict with the provisions of this Ordinance, are hereby repealed insofar as such conflict is concerned.

**ARTICLE XIII. Publication in Pamphlet Form**

This Ordinance shall be published in pamphlet form by and under the authority of the corporate authorities of the City of McHenry, Illinois.

**ARTICLE XIV. Effective Date**

This Ordinance shall be in full force and effect from and after its passage, approval and publication in pamphlet form, as provided by law.

PASSED this 7th day of October, 1998.

AYES: Bolger, Glab, McClatchev, Murgatrovd, Baird.

NAYS: None

ABSENT: None

ABSTAINED: None

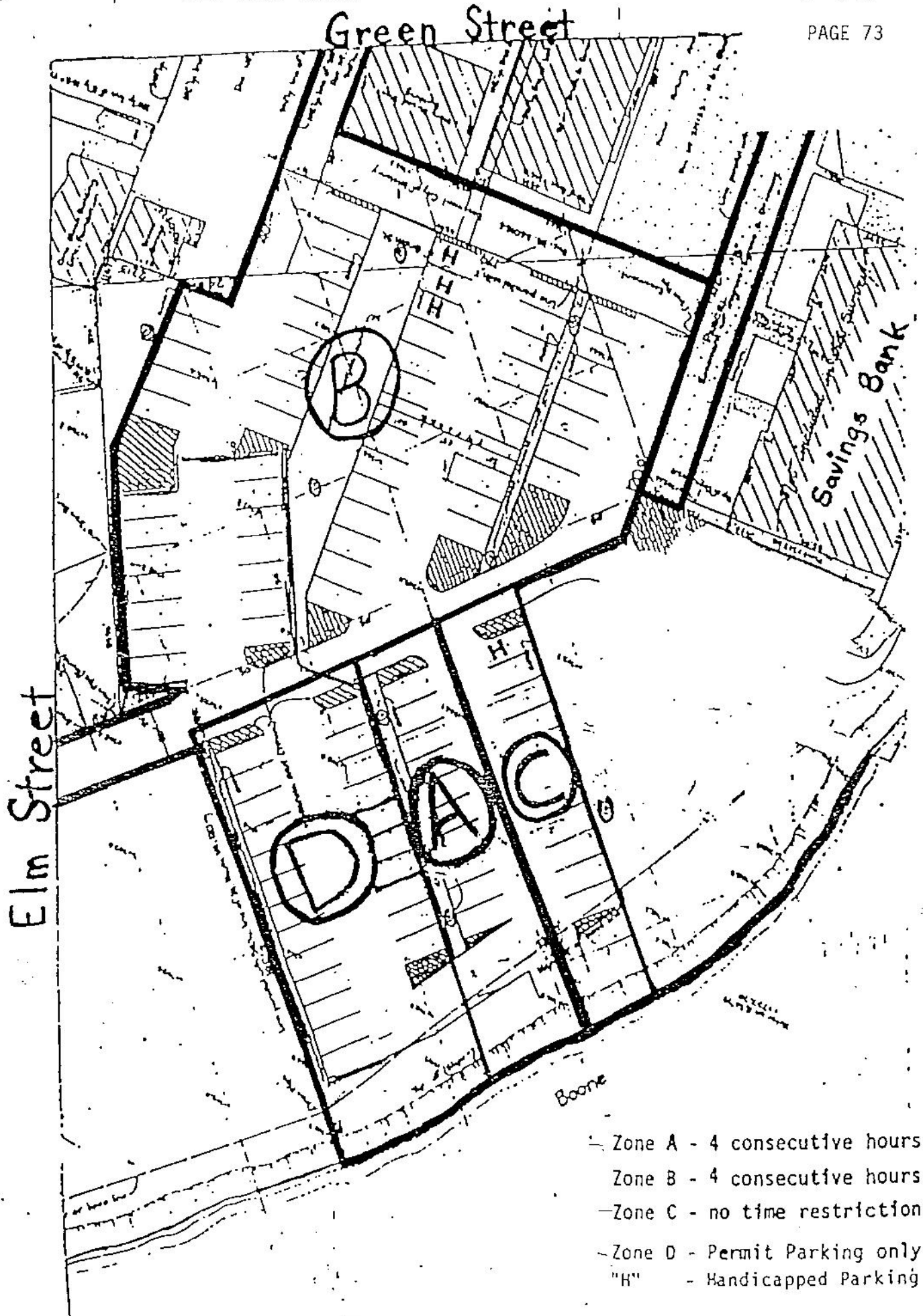
NOT VOTING: None

APPROVED this 7th day of October, 1998.

/s/ Steven J. Cuda  
Mayor

ATTEST:

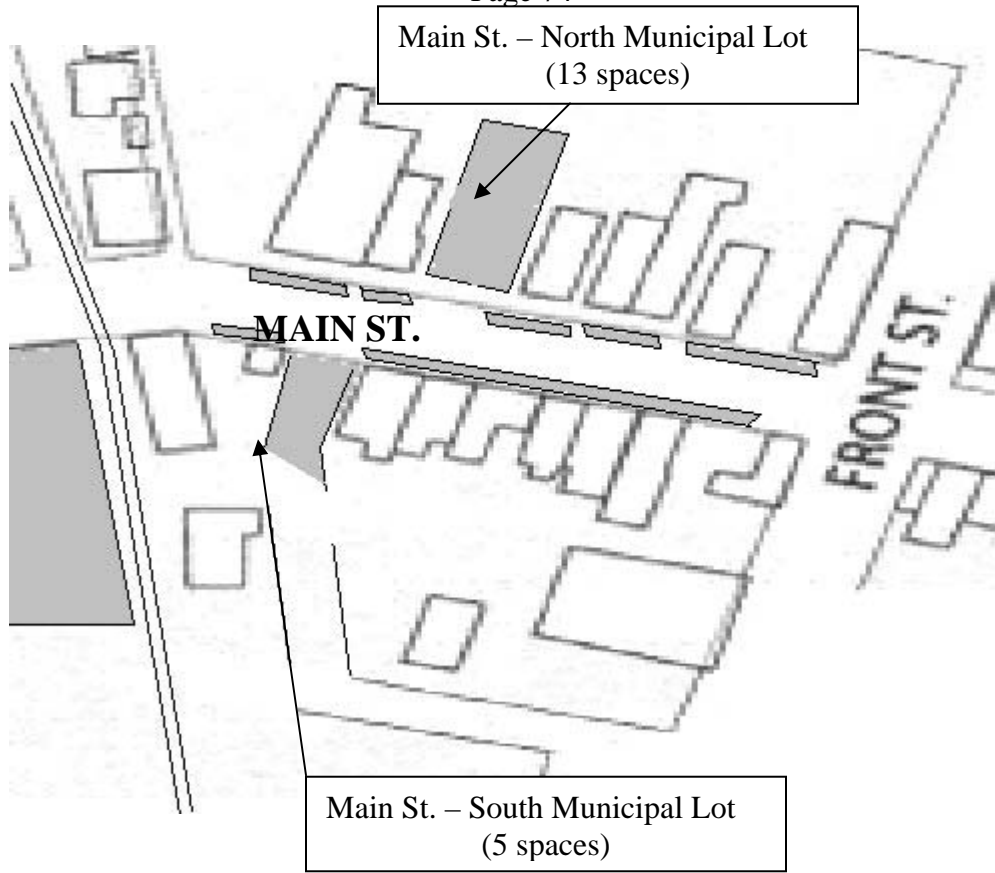
/s/ Pamela J. Althoff  
City Clerk



- Zone A - 4 consecutive hours
- Zone B - 4 consecutive hours
- Zone C - no time restriction
- Zone D - Permit Parking only
- "H" - Handicapped Parking

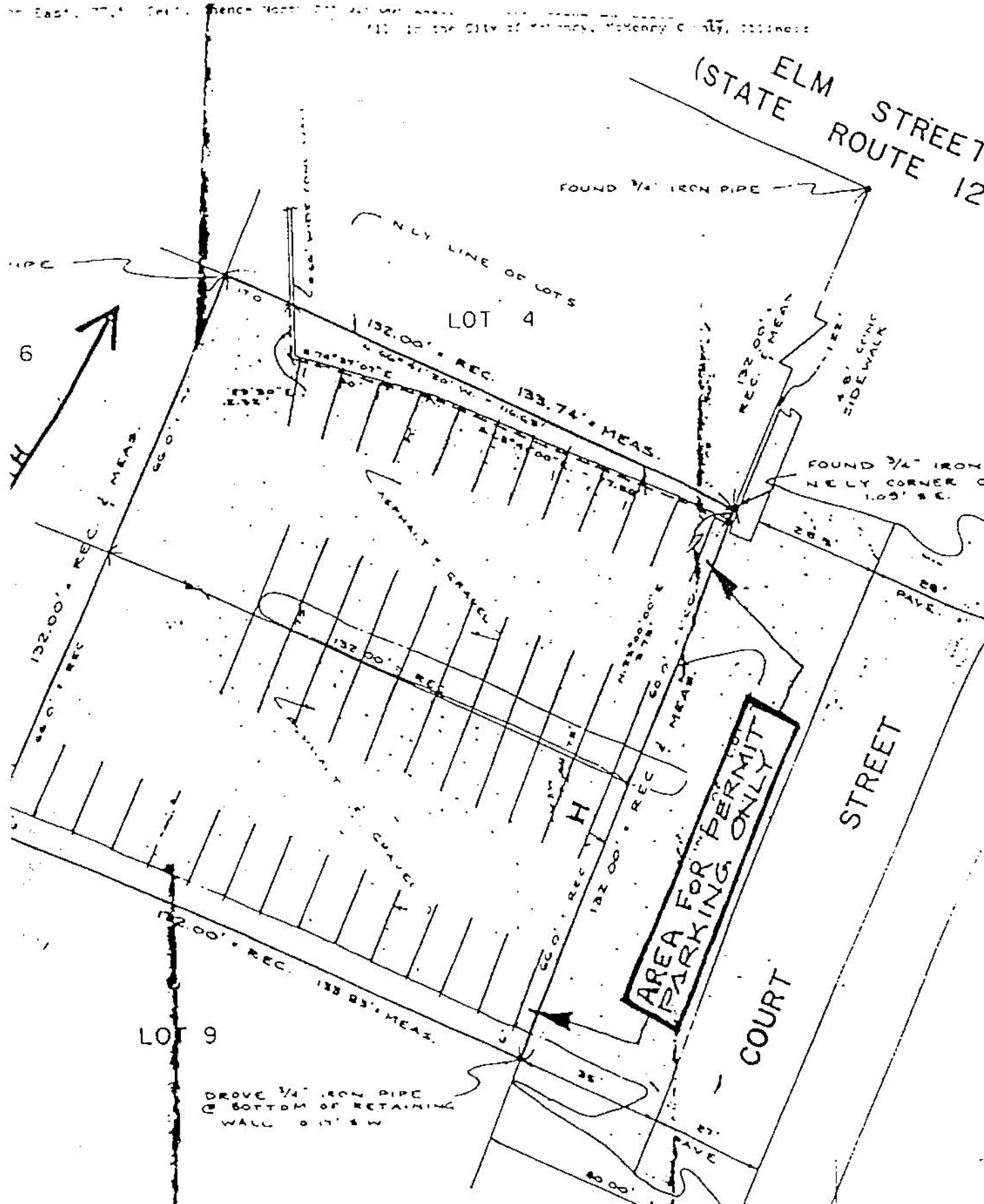
**Appendix A-2**

Page 74

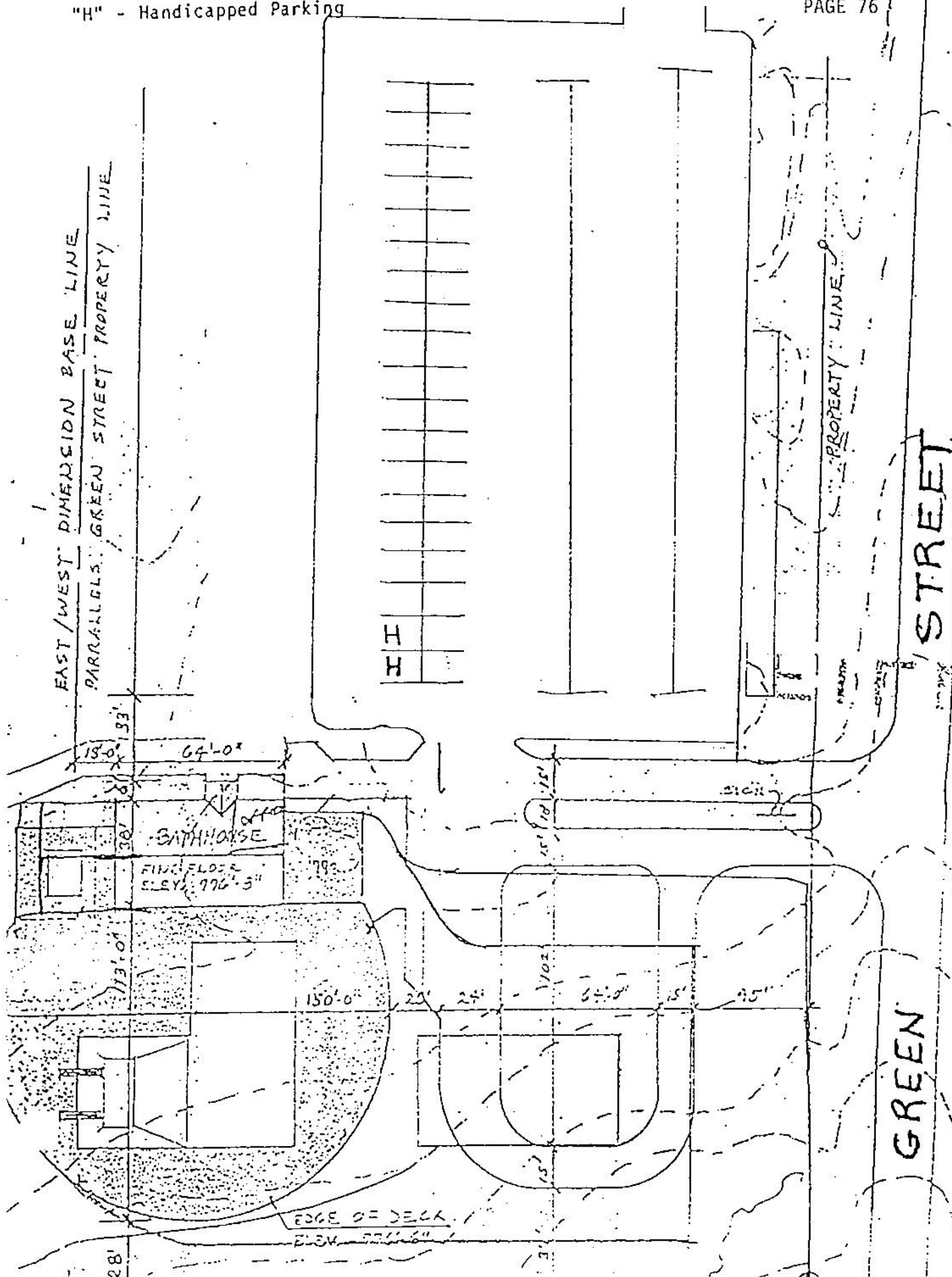


COURT STREET PARKING LOT

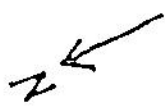
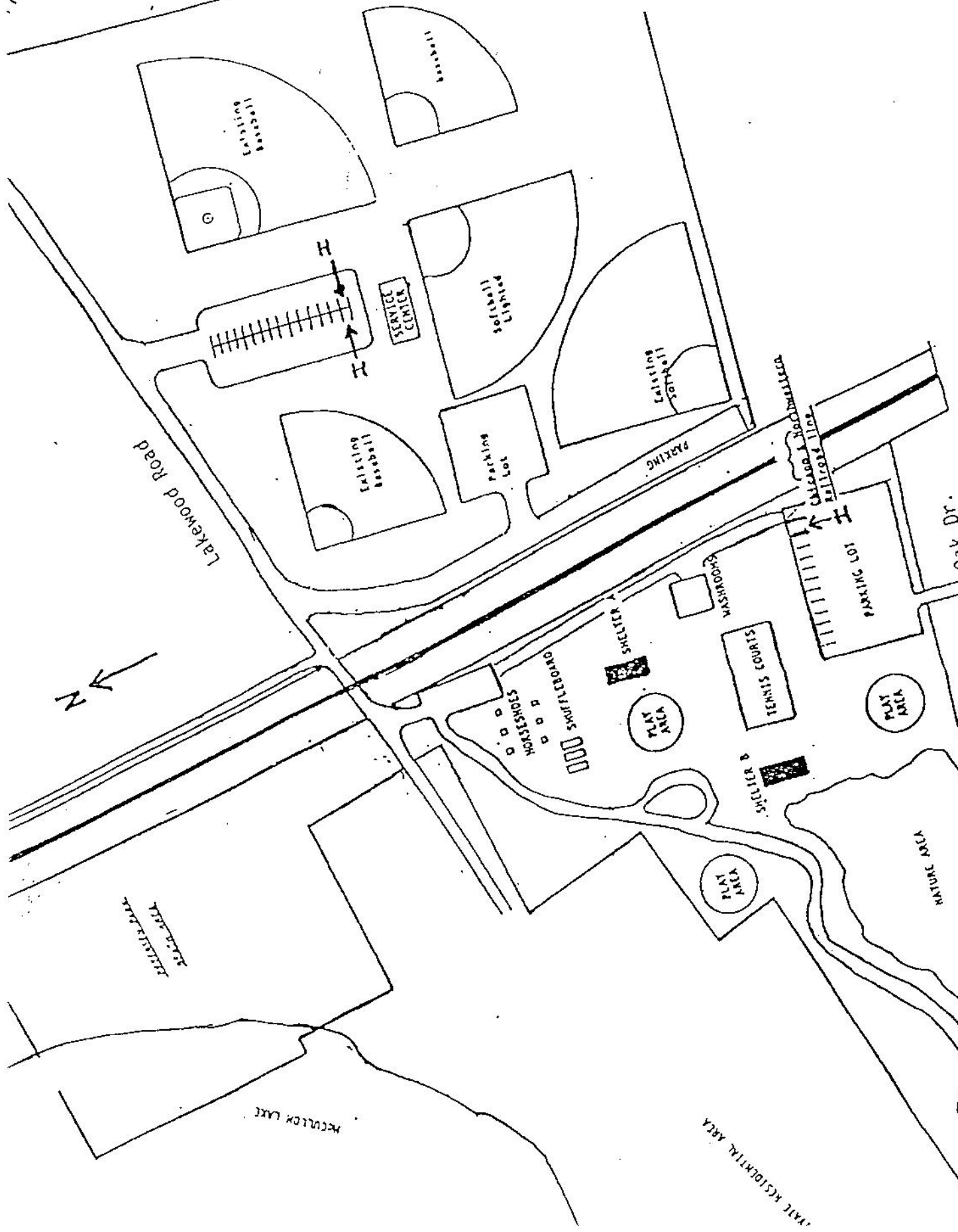
"H" - Handicapped Parking



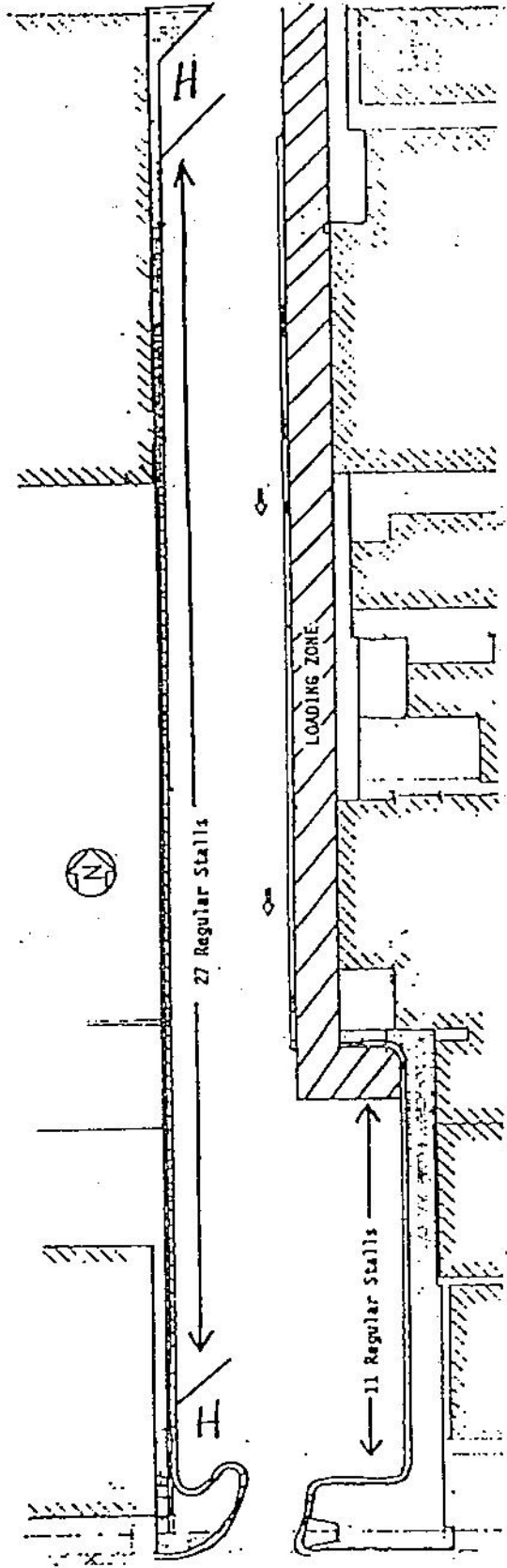
"H" - Handicapped Parking



10m Lake Rd



PEARL STREET



ELM STREET (STATE ROUTE 120)